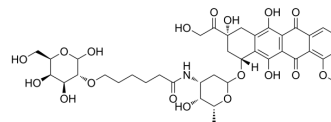


## C2-Gal-Dox

Cat. No.:	HY-163078
Molecular Formula:	C <sub>39</sub> H <sub>49</sub> NO <sub>18</sub>
Molecular Weight:	819.8
Target:	Others
Pathway:	Others
Storage:	Please store the product under the recommended conditions in the Certificate of Analysis.



### BIOLOGICAL ACTIVITY

#### Description

C2-Gal-Dox is a galactose conjugate with high cytotoxicity. C2-Gal-Dox inhibits the growth of a variety of cancer cells<sup>[1]</sup>.

### REFERENCES

[1]. Ye W, et al. Design, synthesis and biological evaluation of the positional isomers of the galactose conjugates able to target hepatocellular carcinoma cells via ASGPR-mediated cellular uptake and cytotoxicity. *Eur J Med Chem.* 2024 Jan 15;264:115988.

**Caution: Product has not been fully validated for medical applications. For research use only.**

Tel: 609-228-6898

Fax: 609-228-5909

E-mail: tech@MedChemExpress.com

Address: 1 Deer Park Dr, Suite Q, Monmouth Junction, NJ 08852, USA