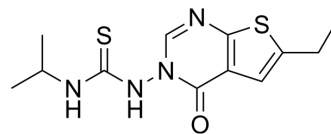


## Myosin-IN-1

Cat. No.:	HY-163120
CAS No.:	849011-39-8
Molecular Formula:	C <sub>12</sub> H <sub>16</sub> N <sub>4</sub> OS <sub>2</sub>
Molecular Weight:	296.41
Target:	Myosin
Pathway:	Cytoskeleton
Storage:	Please store the product under the recommended conditions in the Certificate of Analysis.



### BIOLOGICAL ACTIVITY

#### Description

Myosin-IN-1 (compound F10) is a Myosin inhibitor that specifically targets cardiac myosin. Myosin-IN-1 stabilizes the biochemical and structural closed state of the cardiac myosin motor domain and reduces myocardial force production and calcium sensitivity in vitro. Myosin-IN-1 acts as a negative inotropic agent in isolated Langendroff-perfused rat hearts, reducing stress in isolated myofilaments and left ventricular pressure development. Myosin-IN-1 can be used in heart failure research<sup>[1]</sup>.

### REFERENCES

[1]. Parijat P, et al. Discovery of a novel cardiac-specific myosin modulator using artificial intelligence-based virtual screening. Nat Commun. 2023 Nov 24;14(1):7692.

**Caution: Product has not been fully validated for medical applications. For research use only.**

Tel: 609-228-6898

Fax: 609-228-5909

E-mail: tech@MedChemExpress.com

Address: 1 Deer Park Dr, Suite Q, Monmouth Junction, NJ 08852, USA