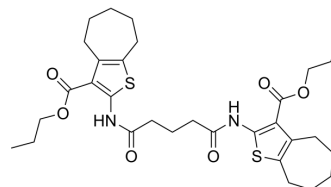


## SPL-IN-1

|                    |   |
|--------------------|---|
| Cat. No.:          | HY-163128   |
| CAS No.:           | 353770-24-8   |
| Molecular Formula: | C <sub>31</sub> H <sub>42</sub> N <sub>2</sub> O <sub>6</sub> S <sub>2</sub>              |
| Molecular Weight:  | 602.8   |
| Target:            | LPL Receptor  |
| Pathway:           | GPCR/G Protein  |
| Storage:           | Please store the product under the recommended conditions in the Certificate of Analysis. |



## BIOLOGICAL ACTIVITY

|             |  |
|-------------|--|
| Description | SPL-IN-1 (compound C17) is a dual species sphingosine-1-phosphate lyase inhibitor <sup>[1]</sup> . |
|-------------|--|

## REFERENCES

[1]. Cellini B, et al. Dual species sphingosine-1-phosphate lyase inhibitors to combine antifungal and anti-inflammatory activities in cystic fibrosis: a feasibility study. *Sci Rep.* 2023;13(1):22692. Published 2023 Dec 20.

**Caution: Product has not been fully validated for medical applications. For research use only.**

Tel: 609-228-6898

Fax: 609-228-5909

E-mail: tech@MedChemExpress.com

Address: 1 Deer Park Dr, Suite Q, Monmouth Junction, NJ 08852, USA