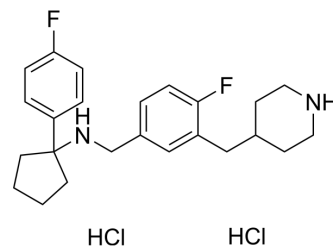


## Autophagy/REV-ERB-IN-1 hydrochloride

Cat. No.:	HY-163136A
Molecular Formula:	C <sub>24</sub> H <sub>32</sub> Cl <sub>2</sub> F <sub>2</sub> N <sub>2</sub>
Molecular Weight:	457.43
Target:	Autophagy; REV-ERB
Pathway:	Autophagy; Metabolic Enzyme/Protease; Vitamin D Related/Nuclear Receptor
Storage:	Please store the product under the recommended conditions in the Certificate of Analysis.



### BIOLOGICAL ACTIVITY

#### Description

Autophagy/REV-ERB-IN-1hydrochloride (Compound 24) is a dual autophagy and REV-ERB inhibitor with anticancer activity. Autophagy/REV-ERB-IN-1 (hydrochloride) has improved potency in blocking autophagy, enhanced toxicity against cancer cells. Autophagy/REV-ERB-IN-1 (hydrochloride) can be used for the research formelanoma<sup>[1]</sup>.

### REFERENCES

[1]. Palomba M, et al. Identification of a Dual Autophagy and REV-ERB Inhibitor with in Vivo Anticancer Efficacy. J Med Chem. 2024 Jan 11;67(1):349-379.

**Caution: Product has not been fully validated for medical applications. For research use only.**

Tel: 609-228-6898

Fax: 609-228-5909

E-mail: tech@MedChemExpress.com

Address: 1 Deer Park Dr, Suite Q, Monmouth Junction, NJ 08852, USA