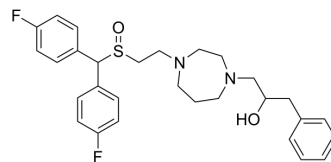


DAT-IN-1

Cat. No.:	HY-163138
Molecular Formula:	C ₂₉ H ₃₄ F ₂ N ₂ O ₂ S
Molecular Weight:	512.65
Target:	Dopamine Transporter
Pathway:	Neuronal Signaling
Storage:	Please store the product under the recommended conditions in the Certificate of Analysis.



BIOLOGICAL ACTIVITY

Description	DAT-IN-1 (Compound 12b) is an atypical DAT inhibitor with a K _i of 8.37 nM. DAT-IN-1 can be used in the study of psychostimulant use disorder (PSUD) ^[1] .
IC ₅₀ & Target	K _i : 8.37 nM (DAT) ^[1] .

REFERENCES

[1]. Okorom AV, et al. Modifications to 1-(4-(2-Bis(4-fluorophenyl)methyl)sulfinyl)alkyl Alicyclic Amines That Improve Metabolic Stability and Retain an Atypical DAT Inhibitor Profile. J Med Chem. 2023 Dec 20.

Caution: Product has not been fully validated for medical applications. For research use only.

Tel: 609-228-6898

Fax: 609-228-5909

E-mail: tech@MedChemExpress.com

Address: 1 Deer Park Dr, Suite Q, Monmouth Junction, NJ 08852, USA