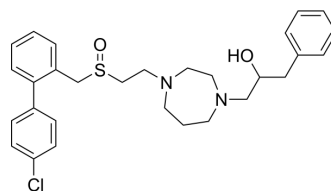


## JJC12-009

Cat. No.:	HY-163156
Molecular Formula:	C <sub>29</sub> H <sub>35</sub> ClN <sub>2</sub> O <sub>2</sub> S
Molecular Weight:	511.12
Target:	Dopamine Transporter
Pathway:	Neuronal Signaling
Storage:	Please store the product under the recommended conditions in the Certificate of Analysis.



### BIOLOGICAL ACTIVITY

#### Description

JJC12-009 is a dopamine transporter (DAT) inhibitor, with a K<sub>i</sub> of 5.45 nM<sup>[1]</sup>.

### REFERENCES

[1]. Ku T C, et al. Series of (([1, 1'-Biphenyl]-2-yl) methyl) sulfinylalkyl Alicyclic Amines as Novel and High Affinity Atypical Dopamine Transporter Inhibitors with Reduced hERG Activity[J]. ACS Pharmacology & Translational Science, 2024.

**Caution: Product has not been fully validated for medical applications. For research use only.**

Tel: 609-228-6898

Fax: 609-228-5909

E-mail: tech@MedChemExpress.com

Address: 1 Deer Park Dr, Suite Q, Monmouth Junction, NJ 08852, USA