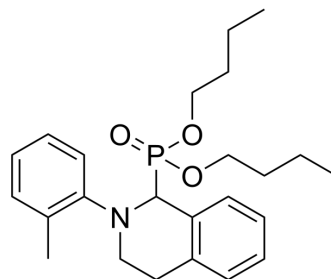


## BChE-IN-24

Cat. No.:	HY-163175
Molecular Formula:	C <sub>24</sub> H <sub>34</sub> NO <sub>3</sub> P
Molecular Weight:	415.51
Target:	Cholinesterase (ChE)
Pathway:	Neuronal Signaling
Storage:	Please store the product under the recommended conditions in the Certificate of Analysis.



## BIOLOGICAL ACTIVITY

### Description

BChE-IN-24 is a selective and reversible BChE inhibitor with an IC<sub>50</sub> of 9 nM. BChE-IN-24 can be used for the research of Alzheimer's disease and related neurodegenerative disorders<sup>[1]</sup>.

## REFERENCES

[1]. Marchán-García J, et al. Green approach to the synthesis of  $\alpha$ -aminophosphonate-tetrahydroisoquinoline hybrids and their anti-cholinesterase activity. *Bioorg Chem.* 2023 Dec 8;143:107008.

**Caution: Product has not been fully validated for medical applications. For research use only.**

Tel: 609-228-6898

Fax: 609-228-5909

E-mail: tech@MedChemExpress.com

Address: 1 Deer Park Dr, Suite Q, Monmouth Junction, NJ 08852, USA