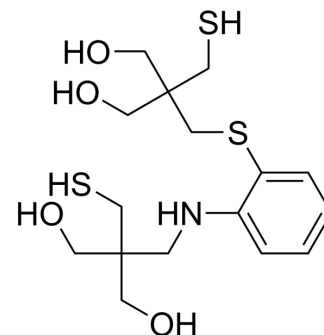


Cu(I) chelator 1

Cat. No.:	HY-163200
Molecular Formula:	C ₁₆ H ₂₇ NO ₄ S ₃
Molecular Weight:	393.58
Target:	Others; Cuproptosis
Pathway:	Others
Storage:	Please store the product under the recommended conditions in the Certificate of Analysis.



BIOLOGICAL ACTIVITY

Description

Cu(I) chelator 1 (Compound LH2) is a chelator which targets the Cu(I) redox state. Cu(I) chelator 1 prevents ROS production [1].

REFERENCES

[1]. Rulmont C, et al. Rationally Designed Cu(I) Ligand to Prevent CuA β -Generated ROS Production in the Alzheimer's Disease Context. Inorg Chem. 2024 Jan 20.

Caution: Product has not been fully validated for medical applications. For research use only.

Tel: 609-228-6898

Fax: 609-228-5909

E-mail: tech@MedChemExpress.com

Address: 1 Deer Park Dr, Suite Q, Monmouth Junction, NJ 08852, USA