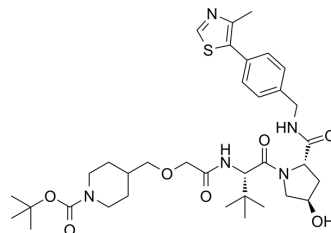


## (S,R,S)-AHPC-CO-CH<sub>2</sub>-O-CH<sub>2</sub>-piperidine-Boc

Cat. No.:	HY-163220
Molecular Formula:	C <sub>35</sub> H <sub>51</sub> N <sub>5</sub> O <sub>7</sub> S
Molecular Weight:	685.87
Target:	Ligands for E3 Ligase
Pathway:	PROTAC
Storage:	Please store the product under the recommended conditions in the Certificate of Analysis.



### BIOLOGICAL ACTIVITY

Description	(S,R,S)-AHPC-CO-CH <sub>2</sub> -O-CH <sub>2</sub> -piperidine-Boc is a conjugate of E3 ligase ligand and linker, consisting of (S,R,S)-AHPC (HY-125845) and the corresponding Linker. (S,R,S)-AHPC is a VH032-based von Hippel-Lindau (VHL) ligand that recruits VHL proteins. (S,R,S)-AHPC-CO-CH <sub>2</sub> -O-CH <sub>2</sub> -piperidine-Boc can be used as a key intermediate for the synthesis of complete PROTAC molecules.
IC <sub>50</sub> & Target	von Hippel-Lindau (VHL) <sup>[1]</sup>

### REFERENCES

[1]. Burslem GM, et al. Targeting BCR-ABL1 in Chronic Myeloid Leukemia by PROTAC-mediated Targeted Protein Degradation. Cancer Res. 2019 Jul 16. pii: canres.1236.2019.

**Caution: Product has not been fully validated for medical applications. For research use only.**

Tel: 609-228-6898

Fax: 609-228-5909

E-mail: tech@MedChemExpress.com

Address: 1 Deer Park Dr, Suite Q, Monmouth Junction, NJ 08852, USA