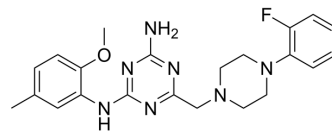


## Fluopipamine

Cat. No.:	HY-163279
CAS No.:	885902-66-9
Molecular Formula:	C <sub>22</sub> H <sub>26</sub> FN <sub>7</sub> O
Molecular Weight:	423.49
Target:	Others
Pathway:	Others
Storage:	Please store the product under the recommended conditions in the Certificate of Analysis.



### BIOLOGICAL ACTIVITY

#### Description

Fluopipamine is an antagonist for Cellulose Synthase 1 (CESA1) with an IC<sub>50</sub> of 0.78 μM. Fluopipamine leads a decrease in glucose uptake into cellulose and hyperaccumulation of CESAs at the PM in etiolated Arabidopsis seedlings<sup>[1]</sup>.

**Caution: Product has not been fully validated for medical applications. For research use only.**

Tel: 609-228-6898

Fax: 609-228-5909

E-mail: tech@MedChemExpress.com

Address: 1 Deer Park Dr, Suite Q, Monmouth Junction, NJ 08852, USA