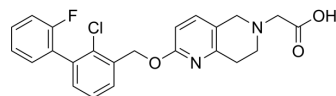


PD-1/PD-L1-IN-39

Cat. No.:	HY-163307
Molecular Formula:	C ₂₃ H ₂₀ ClFN ₂ O ₃
Molecular Weight:	426.87
Target:	PD-1/PD-L1
Pathway:	Immunology/Inflammation
Storage:	Please store the product under the recommended conditions in the Certificate of Analysis.



BIOLOGICAL ACTIVITY

Description	PD-1/PD-L1-IN-39 (X 14) is an orally active PD-1/PD-L1 inhibitor with a IC ₅₀ value of 15.73 nM. PD-1/ PD-L1-in-39 has a good binding affinity for human and mouse PD-L1, with K _D values of 14.62 nM and 392 nM, respectively. PD-1/PD-L1-IN-39 has antitumor activity ^[1] .
In Vivo	PD-1/PD-L1-IN-39 (10 mg/kg, gavage) has a significant antitumor effect in 4T1 (mouse breast cancer cell) isogenic mouse model ^[1] . MCE has not independently confirmed the accuracy of these methods. They are for reference only.

REFERENCES

[1]. Xu Y, et al. Discovery of Highly Potent Small-Molecule PD-1/PD-L1 Inhibitors with a Novel Scaffold for Cancer Immunotherapy. J Med Chem. 2024 Feb 13.

Caution: Product has not been fully validated for medical applications. For research use only.

Tel: 609-228-6898

Fax: 609-228-5909

E-mail: tech@MedChemExpress.com

Address: 1 Deer Park Dr, Suite Q, Monmouth Junction, NJ 08852, USA