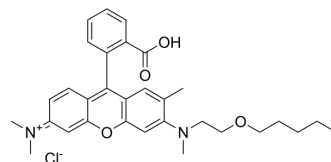


2-Me PeER chloride

Cat. No.:	HY-163324
Molecular Formula:	C ₃₁ H ₃₇ ClN ₂ O ₄
Molecular Weight:	537.09
Target:	Fluorescent Dye
Pathway:	Others
Storage:	Please store the product under the recommended conditions in the Certificate of Analysis.



BIOLOGICAL ACTIVITY

Description

2-Me PeER (chloride) is a fluorogenic probe for CYP3A4 activity that can be used in living cells^[1]. Ex / Em = 520 / 550 nm

REFERENCES

[1]. Kenjiro Hanaoka, et al. A general fluorescence off/on strategy for fluorogenic probes: Steric repulsion-induced twisted intramolecular charge transfer (sr-TICT). *Sci Adv.* 2024 Feb 16;10(7):eadi8847.

Caution: Product has not been fully validated for medical applications. For research use only.

Tel: 609-228-6898

Fax: 609-228-5909

E-mail: tech@MedChemExpress.com

Address: 1 Deer Park Dr, Suite Q, Monmouth Junction, NJ 08852, USA