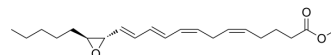


14,15-Leukotriene A4 methyl ester

Cat. No.:	HY-163336
CAS No.:	75290-58-3
Molecular Formula:	C ₂₁ H ₃₂ O ₃
Molecular Weight:	332.48
Target:	Others
Pathway:	Others
Storage:	Please store the product under the recommended conditions in the Certificate of Analysis.



BIOLOGICAL ACTIVITY

Description

14,15-Leukotriene A4 methyl ester (14,15-LTA4 methyl ester) is the methyl esterified form of Leukotriene A4, which can be used for the study of biological effects of leukotrienes^{[1][2]}.

REFERENCES

- [1]. Wetterholm A, et al. 14,15-Dihydroxy-5,8,10,12-eicosatetraenoic acid. Enzymatic formation from 14,15-leukotriene A4. Eur J Biochem. 1988 May 2;173(3):531-6.
- [2]. Rao A V R, et al. Enantiospecific synthesis of 14S, 15S leukotriene A4 methyl ester[J]. Bioorganic & Medicinal Chemistry Letters, 1991, 1(4): 201-204.

Caution: Product has not been fully validated for medical applications. For research use only.

Tel: 609-228-6898

Fax: 609-228-5909

E-mail: tech@MedChemExpress.com

Address: 1 Deer Park Dr, Suite Q, Monmouth Junction, NJ 08852, USA