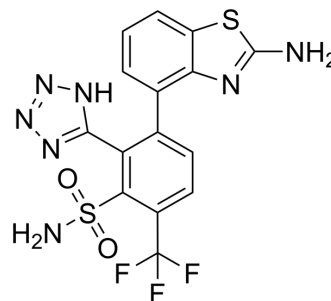


## Metallo-β-lactamase-IN-13

Cat. No.:	HY-163338
CAS No.:	1802366-23-9
Molecular Formula:	C <sub>15</sub> H <sub>10</sub> F <sub>3</sub> N <sub>7</sub> O <sub>2</sub> S <sub>2</sub>
Molecular Weight:	441.41
Target:	Beta-lactamase
Pathway:	Anti-infection
Storage:	Please store the product under the recommended conditions in the Certificate of Analysis.



### BIOLOGICAL ACTIVITY

#### Description

Metallo-β-lactamase-IN-13 (Compound 13i) is a pan Metallo-β-Lactamase inhibitor. Metallo-β-lactamase-IN-13 provides broader coverage of metallo-β-lactamases expressing Gram-negative (GN) bacteria. Metallo-β-lactamase-IN-13 has antibacterial activity against *P. aeruginosa*<sup>[1]</sup>.

### REFERENCES

[1]. Dong S, et al. Structure Guided Discovery of Novel Pan Metallo-β-Lactamase Inhibitors with Improved Gram-Negative Bacterial Cell Penetration. *J Med Chem.* 2024 Feb 22.

**Caution: Product has not been fully validated for medical applications. For research use only.**

Tel: 609-228-6898

Fax: 609-228-5909

E-mail: tech@MedChemExpress.com

Address: 1 Deer Park Dr, Suite Q, Monmouth Junction, NJ 08852, USA