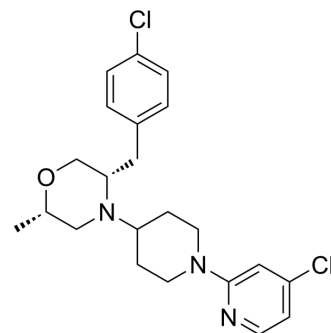


CHI3L1-IN-1

Cat. No.:	HY-163387
CAS No.:	2982256-78-8
Molecular Formula:	C ₂₂ H ₂₇ Cl ₂ N ₃ O
Molecular Weight:	420.38
Target:	Others
Pathway:	Others
Storage:	Please store the product under the recommended conditions in the Certificate of Analysis.



BIOLOGICAL ACTIVITY

Description	CHI3L1-IN-1 (Compound 30) is an inhibitor for Chitinase-3-like protein 1 (CHI3L1) (YKL-40) with IC ₅₀ of 50 nM. CHI3L1-IN-1 inhibits hERG channel with an IC ₅₀ of 2.3 μM ^[1] .
IC ₅₀ & Target	50 nM (CHI3L1), 2.3 μM (hERG)
In Vivo	CHI3L1-IN-1 (3 mg/kg, i.v.) reveals a clearance of 24 mL/min/kg and a bioavailability of 18% in BALB/c mice ^[1] . MCE has not independently confirmed the accuracy of these methods. They are for reference only.

REFERENCES

[1]. Czystkowski W, et al., Structure-Based Discovery of High-Affinity Small Molecule Ligands and Development of Tool Probes to Study the Role of Chitinase-3-Like Protein 1. J Med Chem. 2024 Mar 14;67(5):3959-3985.

Caution: Product has not been fully validated for medical applications. For research use only.

Tel: 609-228-6898

Fax: 609-228-5909

E-mail: tech@MedChemExpress.com

Address: 1 Deer Park Dr, Suite Q, Monmouth Junction, NJ 08852, USA