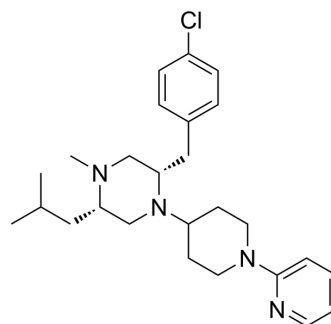


## CHI3L1-IN-2

Cat. No.:	HY-163388
CAS No.:	2982257-63-4
Molecular Formula:	C <sub>26</sub> H <sub>37</sub> ClN <sub>4</sub>
Molecular Weight:	441.05
Target:	Others
Pathway:	Others
Storage:	Please store the product under the recommended conditions in the Certificate of Analysis.



## BIOLOGICAL ACTIVITY

### Description

CHI3L1-IN-2 (Compound 36) is a CHI3L1(YKL-40) inhibitor. CHI3L1-IN-2 inhibits the interaction between CHI3L1 and heparan sulfate (CHI3L1:HSIII), with an IC<sub>50</sub> of 26 nM<sup>[1]</sup>.

## REFERENCES

[1]. Czystkowski W, et al. Structure-Based Discovery of High-Affinity Small Molecule Ligands and Development of Tool Probes to Study the Role of Chitinase-3-Like Protein 1. *J Med Chem.* 2024 Mar 14;67(5):3959-3985.

**Caution: Product has not been fully validated for medical applications. For research use only.**

Tel: 609-228-6898

Fax: 609-228-5909

E-mail: tech@MedChemExpress.com

Address: 1 Deer Park Dr, Suite Q, Monmouth Junction, NJ 08852, USA