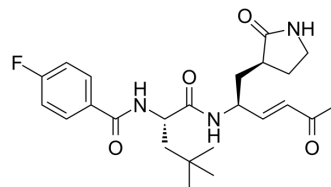


Mpro/Cathepsin L-IN-1

Cat. No.:	HY-163389
Molecular Formula:	C ₂₄ H ₃₂ FN ₃ O ₄
Molecular Weight:	445.53
Target:	SARS-CoV; Cathepsin
Pathway:	Anti-infection; Metabolic Enzyme/Protease
Storage:	Please store the product under the recommended conditions in the Certificate of Analysis.



BIOLOGICAL ACTIVITY

Description	Mpro/Cathepsin L-IN-1 (Compound 4d) is a SARS-CoV-2 M ^{Pro} /hCatL inhibitor, with K _i s of 5.54 μM and 0.701 μM respectively ^[1] .
IC ₅₀ & Target	cathepsin L
In Vitro	Mpro/Cathepsin L-IN-1 (100 μM) shows no cytotoxicity against uninfected and infected Huh-7-ACE2 cells ^[1] . MCE has not independently confirmed the accuracy of these methods. They are for reference only.

REFERENCES

[1]. Santo Previti, et al. Identification of Dual Inhibitors Targeting Main Protease (Mpro) and Cathepsin L as Potential Anti-SARS-CoV-2 Agents. ACS Med. Chem. Lett. 2024

Caution: Product has not been fully validated for medical applications. For research use only.

Tel: 609-228-6898

Fax: 609-228-5909

E-mail: tech@MedChemExpress.com

Address: 1 Deer Park Dr, Suite Q, Monmouth Junction, NJ 08852, USA