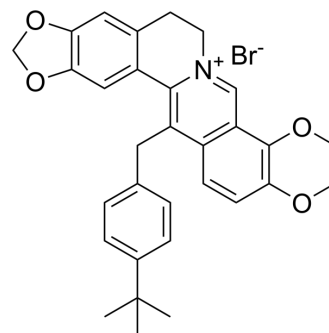


## HWY-289

Cat. No.:	HY-163459
CAS No.:	908001-51-4
Molecular Formula:	C <sub>31</sub> H <sub>32</sub> BrNO <sub>4</sub>
Molecular Weight:	562.49
Target:	Fungal
Pathway:	Anti-infection
Storage:	Please store the product under the recommended conditions in the Certificate of Analysis.



### BIOLOGICAL ACTIVITY

#### Description

HWY-289 is a semisynthetic protoberberine derivative, has broad-spectrum and potent activities against phytopathogenic fungi, particularly *Botrytis cinerea* (EC<sub>50</sub> = 1.34 µg/mL). HWY-289 changes the morphology of the mycelium and the internal structure of cells. HWY-289 reduces ATP content, ATPase activities, and key enzyme activities in the TCA cycle<sup>[1]</sup>.

### REFERENCES

[1]. An JX, et al. Antifungal Activity and Putative Mechanism of HWY-289, a Semisynthetic Protoberberine Derivative, against *Botrytis cinerea*. *J Agric Food Chem*. 2024 Apr 10;72(14):7716-7726.

**Caution: Product has not been fully validated for medical applications. For research use only.**

Tel: 609-228-6898

Fax: 609-228-5909

E-mail: tech@MedChemExpress.com

Address: 1 Deer Park Dr, Suite Q, Monmouth Junction, NJ 08852, USA