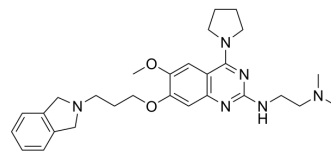


## MS8535

Cat. No.:	HY-163460
Molecular Formula:	C <sub>28</sub> H <sub>38</sub> N <sub>6</sub> O <sub>2</sub>
Molecular Weight:	490.64
Target:	Others
Pathway:	Others
Storage:	Please store the product under the recommended conditions in the Certificate of Analysis.



### BIOLOGICAL ACTIVITY

<b>Description</b>	MS8535 is a SPIN1 selective inhibitor, with an IC <sub>50</sub> of 0.2 μM <sup>[1]</sup> .
<b>In Vitro</b>	MS8535 (compound 18, 0-10 μM) concentration dependently blocks the interactions between SPIN1 and histone H3 in U2OS cells with an EC <sub>50</sub> of 1.1 ± 0.3 μM (n = 2) <sup>[1]</sup> . MCE has not independently confirmed the accuracy of these methods. They are for reference only.
<b>In Vivo</b>	MS8535 (compound 18, 5 mg/kg, ip) is well tolerated by the treated mice and no clinical signs are observed in the PK study <sup>[1]</sup> . MCE has not independently confirmed the accuracy of these methods. They are for reference only.

**Caution: Product has not been fully validated for medical applications. For research use only.**

Tel: 609-228-6898

Fax: 609-228-5909

E-mail: tech@MedChemExpress.com

Address: 1 Deer Park Dr, Suite Q, Monmouth Junction, NJ 08852, USA