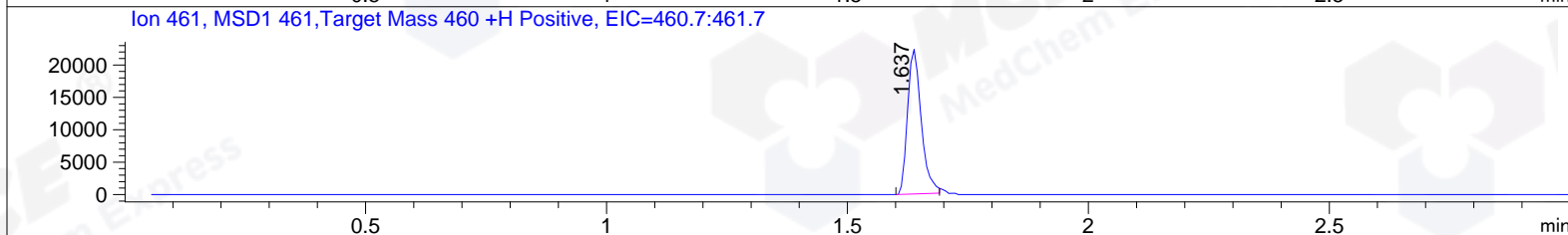
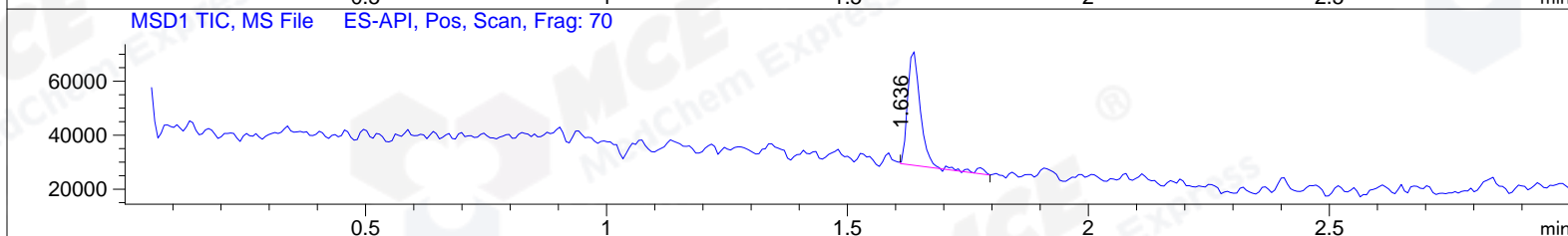
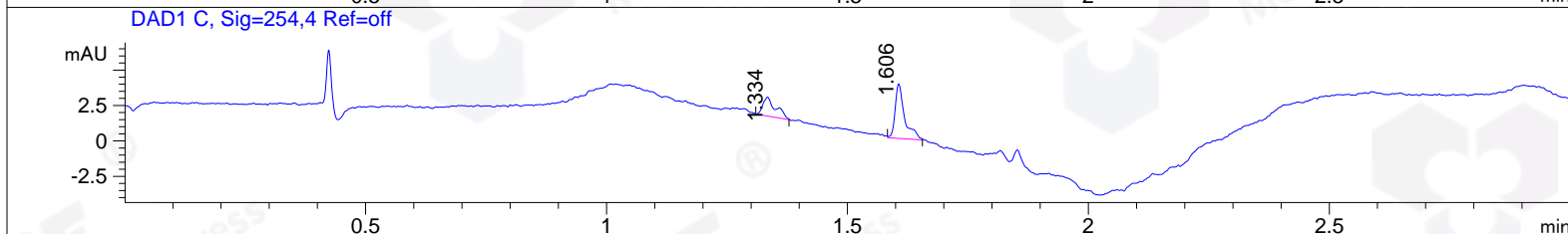
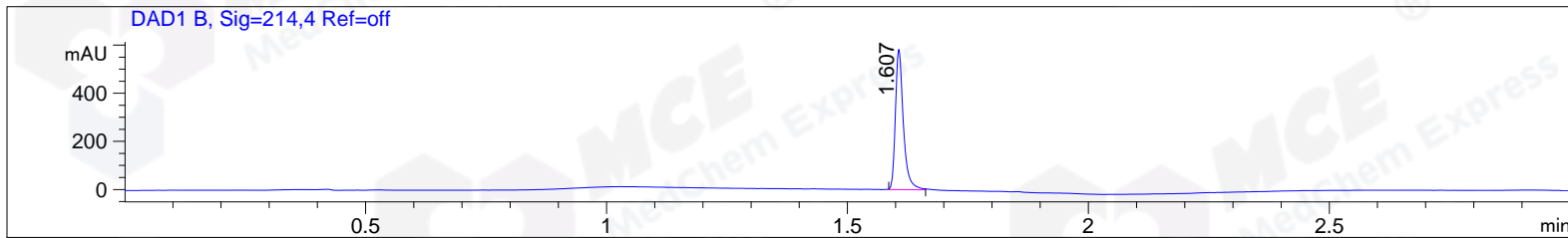


File ..0170726 2017-07-26 08-30-32\ZDM4475-006-2.D Tgt Mass (CHM):
 Injection Date : 26 Jul 17 10:38 am +0800 Seq. Line : 27
 Sample Name : ZDM4475-006-2 Location : P1-B-04
 Acq. Operator : ZLJ_587 Inj : 1
 Spec. Reported : MS Integration Inj Volume : 1 ul
 Acq. Method : D:\chem32\1\DATA\20170726\20170726 2017-07-26 08-30-32\1-POS-3MIN.M
 Analysis Method : D:\CHEM32\1\DATA\20170726\20170726 2017-07-26 08-30-32\1-POS-3MIN.M
 Catalog No : HY-16363 Batch#25569 A-RP-186
 Method Info : Mobile Phase: A: water(0.01%TFA) B:ACN(0.01%TFA)
 Gradient: 5% to 95%B within 1.3 min
 Flow Rate :1.8ml/min
 Column :SunFire C18, 4.6*50mm,3.5um A-RP-186
 Oven Temperature : 45C



Integration Results for DAD1 B, Sig=214,4 Ref=off

RetTim	Width	Area	Height	Area%	MS (+)
1.61	0.02	668.29	582.82	100.00	461

Integration Results for DAD1 C, Sig=254,4 Ref=off

RetTim	Width	Area	Height	Area%	MS (+)
1.33	0.03	2.49	1.34	32.10	245
1.61	0.02	5.27	3.86	67.90	461

Integration Results for MSD1 TIC, MS File

RetTim	Width	Area	Height	Area%	MS (+)
1.64	0.03	80736.71	42670.75	100.00	245

Ret. Time: 1.64

<<<< POSITIVE SPECTRA >>>>

