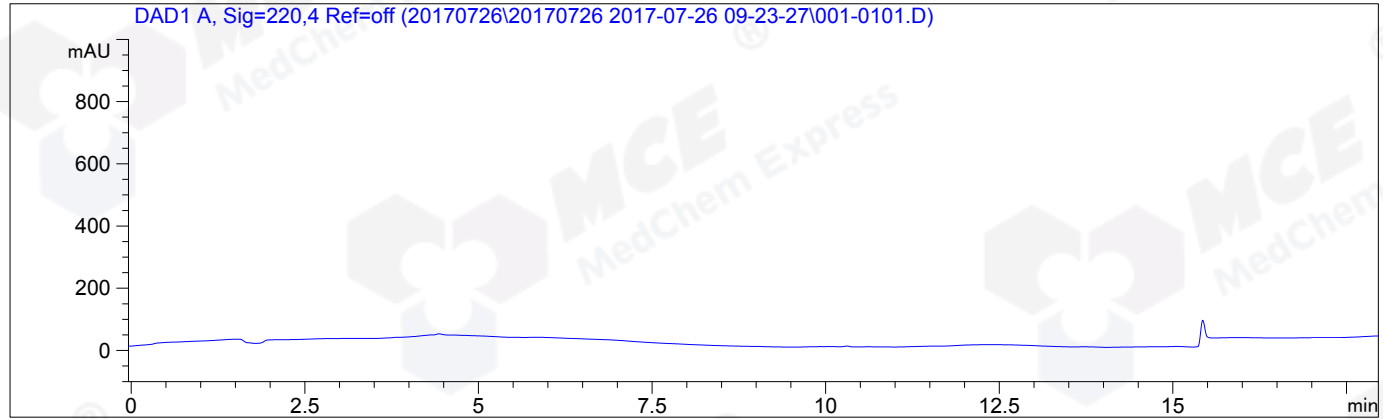


```
=====
Acq. Operator   : ZLL                               Seq. Line :    1
Acq. Instrument : HPLC-12                           Location  : Vial 1
Injection Date  : 2017-07-26 09:25:03              Inj       :    1
                                                    Inj Volume: 5.0 µl
Acq. Method     : C:\CHEM32\2\DATA\20170726\20170726 2017-07-26 09-23-27\30-90A,220NM.M
Last changed    : 2017-07-26 09:38:45 by ZLL
                  (modified after loading)
Analysis Method : C:\CHEM32\2\METHODS\30-90A,220NM.M
Last changed    : 2017-07-26 10:15:31 by ZLL
                  (modified after loading)
Catalog No      : HY-16363 Batch#25569
                  A-RP-177
=====
```

Additional Info : Peak(s) manually integrated



```
=====
                          Area Percent Report
=====
```

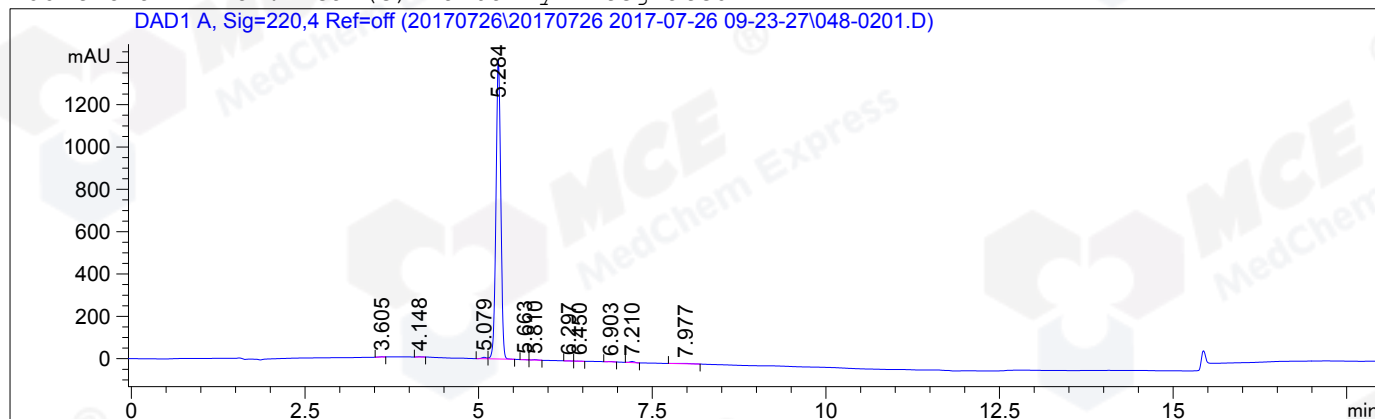
```
Sorted By           :      Signal
Multiplier:         :      1.0000
Dilution:           :      1.0000
Use Multiplier & Dilution Factor with ISTDs
```

No peaks found

```
=====
*** End of Report ***
=====
```

=====  
Acq. Operator : ZLL Seq. Line : 2  
Acq. Instrument : HPLC-12 Location : Vial 48  
Injection Date : 2017-07-26 09:45:52 Inj : 1  
Inj Volume : 5.0 µl  
Acq. Method : C:\CHEM32\2\DATA\20170726\20170726 2017-07-26 09-23-27\30-90A,220NM.M  
Last changed : 2017-07-26 09:49:18 by ZLL  
(modified after loading)  
Analysis Method : C:\CHEM32\2\METHODS\30-90A,220NM.M  
Last changed : 2017-07-26 10:08:48 by ZLL  
(modified after loading)  
Catalog No : HY-16363 Batch#25569  
A-RP-177

Additional Info : Peak(s) manually integrated



=====  
Area Percent Report  
=====

Sorted By : Signal  
Multiplier: : 1.0000  
Dilution: : 1.0000  
Use Multiplier & Dilution Factor with ISTDs

Signal 1: DAD1 A, Sig=220,4 Ref=off

Peak #	RetTime [min]	Type	Width [min]	Area [mAU*s]	Height [mAU]	Area %
1	3.605	MM	0.0756	6.40722	1.41291	0.0930
2	4.148	MM	0.0839	6.23236	1.23828	0.0905
3	5.079	MF	0.0815	34.05387	6.96231	0.4945
4	5.284	FM	0.0797	6768.63379	1415.85205	98.2889
5	5.663	MF	0.0595	1.51802	4.25277e-1	0.0220
6	5.810	FM	0.0760	8.98455	1.97030	0.1305
7	6.297	MF	0.0748	2.06528	4.59997e-1	0.0300
8	6.450	FM	0.0833	2.04963	4.10205e-1	0.0298
9	6.903	MM	0.0859	8.71338	1.69077	0.1265
10	7.210	MM	0.0801	24.27808	5.04932	0.3525
11	7.977	MM	0.2282	23.52858	1.71850	0.3417

Totals : 6886.46476 1437.18993

=====  
\*\*\* End of Report \*\*\*