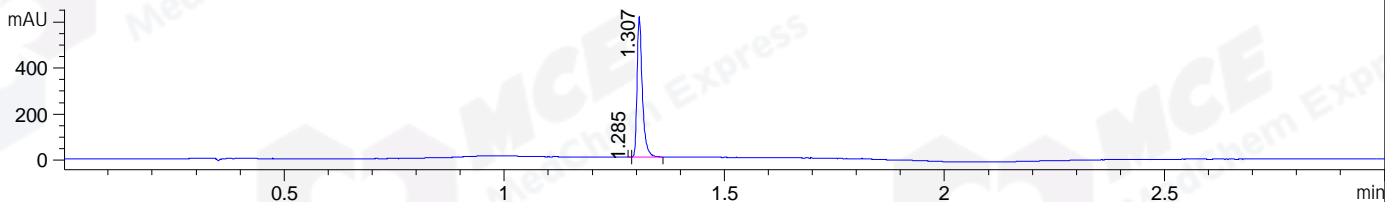
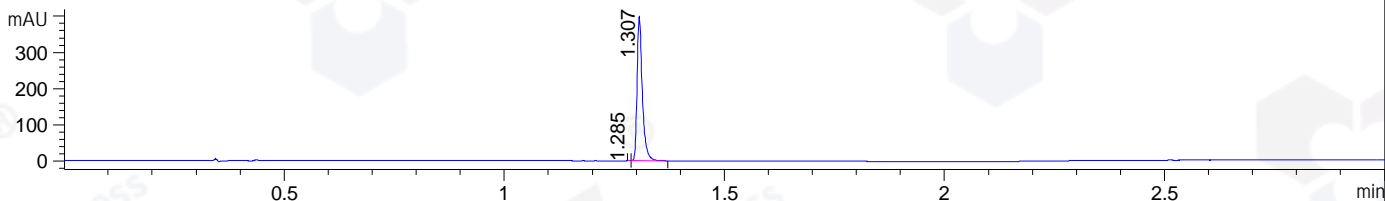


File ..1\DATA\2020\20200603\984\BIZ2020-602-SCH1.D Tgt Mass (CHM):
Injection Date : 3 Jun 20 11:07 am +0800 Seq. Line : 30
Sample Name : BIZ2020-602-SCH1 Location : P1-A-09
Acq. Operator : ZJ_1432 Inj : 1
Spec. Reported : MS Integration Inj Volume : 1 ul
Acq. Method : D:\Chem32\1\data\2020\20200603\984\1-POS-3MIN.M
Analysis Method : D:\CHEM32\1\DATA\2020\20200603\984\1-POS-3MIN.M
Catalog No : HY-16379
Method Info : Mobile Phase: A: water(0.01%TFA) B:ACN(0.01%TFA)
Gradient: 5% to 95%B within 1.3 min
Flow Rate :1.8ml/min
Column :SunFire C18, 4.6*50mm,3.5um A-RP-607
Oven Temperature : 45□

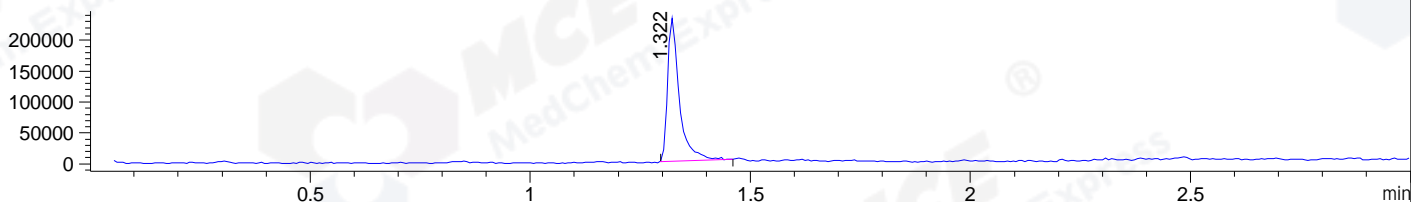
DAD1 B, Sig=214,4 Ref=off



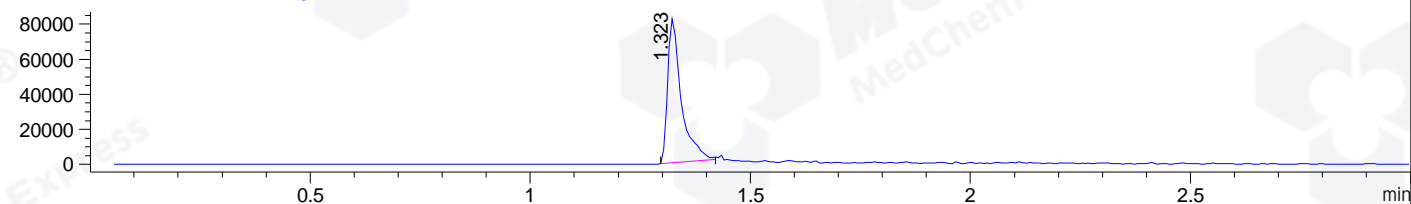
DAD1 C, Sig=254,4 Ref=off



MSD1 TIC, MS File ES-API, Pos, Scan, Frag: 70



Ion 473, MSD1 473, Target Mass 472 +H Positive, EIC=472.7:473.7



Integration Results for DAD1 B, Sig=214,4 Ref=off

RetTim	Width	Area	Height	Area%	MS (+)
1.28	0.01	0.35	1.15	0.07	ND
1.31	0.01	510.72	611.21	99.93	473

Integration Results for DAD1 C, Sig=254,4 Ref=off

RetTim	Width	Area	Height	Area%	MS (+)
1.28	0.01	0.18	0.45	0.05	ND
1.31	0.01	332.38	400.03	99.95	473

Integration Results for MSD1 TIC, MS File

RetTim	Width	Area	Height	Area%	MS (+)
1.32	0.03	439103.00	231729.19	100.00	473

Ret. Time: 1.32

<<<< POSITIVE SPECTRA >>>>

ES-API Positive

