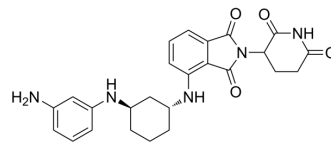


Thalidomide-NH-cyclohexane-NH-Ph-NH₂

Cat. No.:	HY-163961A
Molecular Formula:	C ₂₅ H ₂₇ N ₅ O ₄
Molecular Weight:	461.51
Target:	E3 Ligase Ligand-Linker Conjugates
Pathway:	PROTAC
Storage:	Please store the product under the recommended conditions in the Certificate of Analysis.



BIOLOGICAL ACTIVITY

Description

Thalidomide-NH-cyclohexane-NH-Ph-NH₂ is an E3 Ligase Ligand-Linker Conjugate. Thalidomide-NH-cyclohexane-NH-Ph-NH₂ can be used to synthesize PROTAC erf3a Degradar-2 (HY-163938A)^[1].

REFERENCES

[1]. Drug for treating human tumor by erf3a targeted protein degradation mechanism. China, CN117801051 A. 2024-04-02.

Caution: Product has not been fully validated for medical applications. For research use only.

Tel: 609-228-6898

Fax: 609-228-5909

E-mail: tech@MedChemExpress.com

Address: 1 Deer Park Dr, Suite Q, Monmouth Junction, NJ 08852, USA