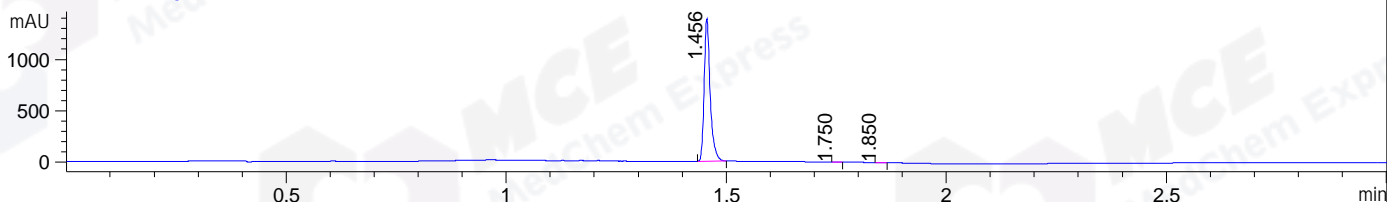
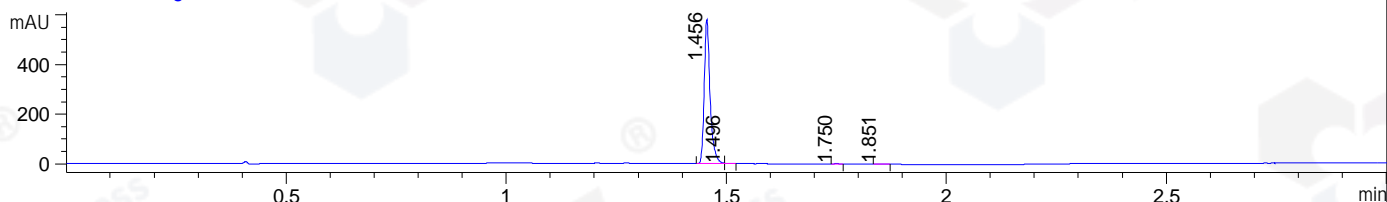


File ..DATA\2020\20200921\1112\CPK2020-921-09491.D Tgt Mass (CHM):
Injection Date : 21 Sep 20 5:03 pm +0800 Seq. Line : 103
Sample Name : CPK2020-921-09491 Location : P1-C-09
Acq. Operator : zyj_1547 Inj : 1
Spec. Reported : MS Integration Inj Volume : 1 ul
Acq. Method : D:\Chem32\1\data\2020\20200921\1112\1-POS-3MIN.M
Analysis Method : D:\CHEM32\1\DATA\2020\20200921\1112\1-POS-3MIN.M
Catalog No : HY-16425
Method Info : Mobile Phase: A: water(0.01%TFA) B:ACN(0.01%TFA)
Gradient: 5% to 95%B within 1.3 min
Flow Rate :1.8ml/min
Column :SunFire C18, 4.6*50mm,3.5um A-RP-624

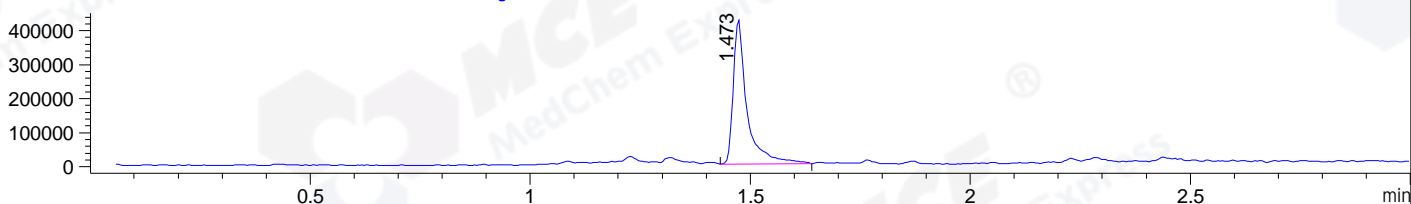
DAD1 B, Sig=214,4 Ref=off



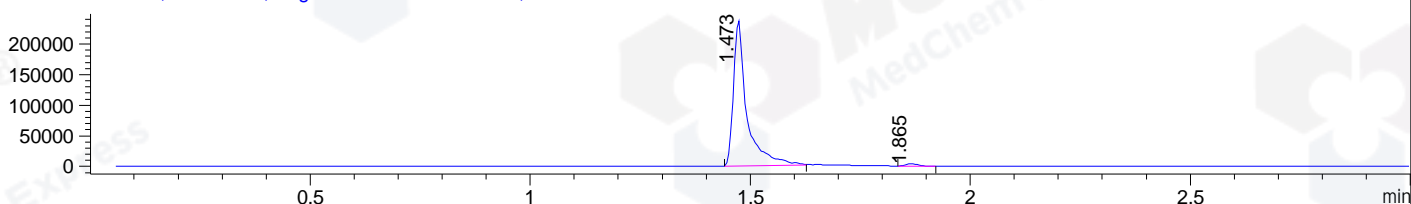
DAD1 C, Sig=254,4 Ref=off



MSD1 TIC, MS File ES-API, Pos, Scan, Frag: 70



Ion 340, MSD1 340, Target Mass 339 +H Positive, EIC=339.7:340.7



Integration Results for DAD1 B, Sig=214,4 Ref=off

RetTim	Width	Area	Height	Area%	MS (+)
1.46	0.02	1314.35	1386.63	99.71	340
1.75	0.01	1.79	2.20	0.14	571
1.85	0.02	2.01	2.04	0.15	340

Integration Results for DAD1 C, Sig=254,4 Ref=off

RetTim	Width	Area	Height	Area%	MS (+)
1.46	0.02	540.83	582.42	99.30	340
1.50	0.01	1.64	2.16	0.30	340
1.75	0.01	1.07	1.30	0.20	571
1.85	0.02	1.11	1.05	0.20	340

Integration Results for MSD1 TIC, MS File

RetTim	Width	Area	Height	Area%	MS (+)
1.47	0.03	925724.19	426455.75	100.00	340

Ret. Time: 1.47

<<<< POSITIVE SPECTRA >>>>

ES-API Positive

