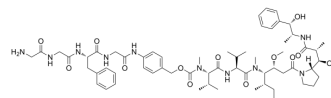


GGFG-PAB-MMAE

Cat. No.:	HY-164788
CAS No.:	3049886-19-0
Molecular Formula:	C ₆₂ H ₉₂ N ₁₀ O ₁₃
Molecular Weight:	1185.45
Target:	Drug-Linker Conjugates for ADC; Microtubule/Tubulin
Pathway:	Antibody-drug Conjugate/ADC Related; Cell Cycle/DNA Damage; Cytoskeleton
Storage:	-20°C, sealed storage, away from moisture * In solvent : -80°C, 6 months; -20°C, 1 month (sealed storage, away from moisture)



SOLVENT & SOLUBILITY

In Vitro

DMSO : 120 mg/mL (101.23 mM; Need ultrasonic)

Preparing Stock Solutions	Solvent		1 mg	5 mg	10 mg
	Concentration	Mass			
	1 mM		0.8436 mL	4.2178 mL	8.4356 mL
	5 mM		0.1687 mL	0.8436 mL	1.6871 mL
	10 mM		0.0844 mL	0.4218 mL	0.8436 mL

Please refer to the solubility information to select the appropriate solvent.

BIOLOGICAL ACTIVITY

Description

GGFG-PAB-MMAE (Comp 58054-1) is a drug-linker conjugate for ADC. GGFG-PAB-MMAE contains the ADC linker (GGFG-PAB) and a potent tubulin polymerization inhibitor MMAE (HY-15162)^[1].

IC₅₀ & Target

Auristatin

REFERENCES

[1]. Jinkun Huang, et al. Highly stable targeted linker-drug conjugate. US20240293570A1.

Caution: Product has not been fully validated for medical applications. For research use only.

Tel: 609-228-6898

Fax: 609-228-5909

E-mail: tech@MedChemExpress.com

Address: 1 Deer Park Dr, Suite Q, Monmouth Junction, NJ 08852, USA