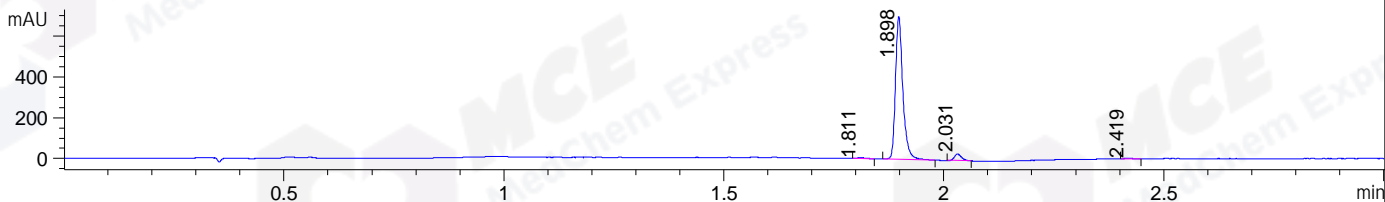
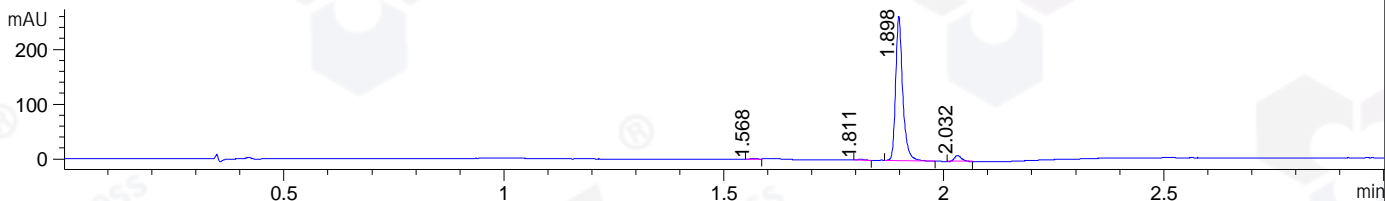


File ..ATA\2019\20190822\705\CPK2019-822-20154--.D Tgt Mass (CHM):
 Injection Date : 22 Aug 19 5:09 pm +0800 Seq. Line : 105
 Sample Name : CPK2019-822-20154 Location : P1-D-06
 Acq. Operator : ZJ_1432 Inj : 1
 Spec. Reported : MS Integration Inj Volume : 5 ul
 Acq. Method : D:\Chem32\1\data\2019\20190822\705\1-POS-3MIN.M
 Analysis Method : D:\CHEM32\1\DATA\2019\20190822\705\1-POS-3MIN.M
 Catalog No : HY-16488 Batch# 20154
 Method Info : Mobile Phase: A: water(0.01%TFA) B:ACN(0.01%TFA)
 Gradient: 5% to 95%B within 1.3 min
 Flow Rate :1.8ml/min
 Column :SunFire C18, 4.6*50mm,3.5um A-RP-433
 Oven Temperature : 45□

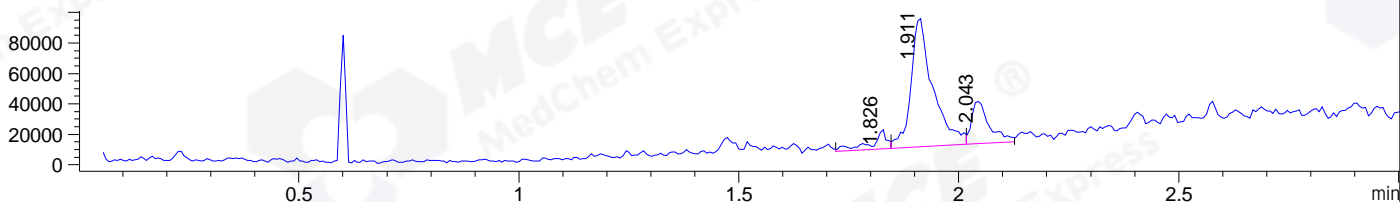
DAD1 B, Sig=214,4 Ref=off



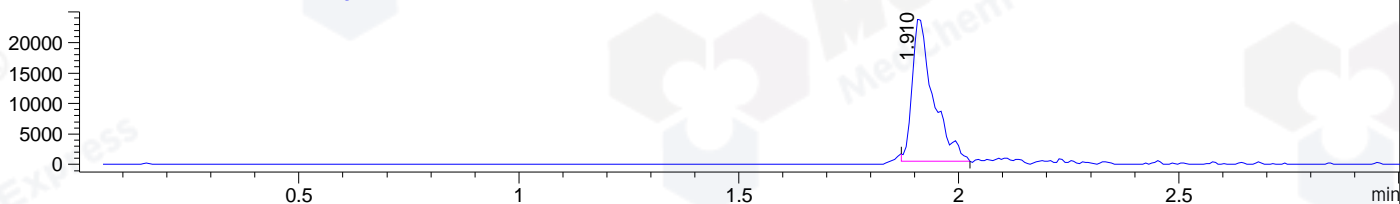
DAD1 C, Sig=254,4 Ref=off



MSD1 TIC, MS File ES-API, Pos, Scan, Frag: 70



Ion 681.77, MSD1 681.77, Target Mass 680.77 +H Positive, EIC=681.47:682.47



Integration Results for DAD1 B, Sig=214,4 Ref=off

RetTim	Width	Area	Height	Area%	MS (+)
1.81	0.02	5.19	4.73	0.61	697
1.90	0.02	816.49	700.50	95.28	681
2.03	0.02	31.52	30.77	3.68	679
2.42	0.02	3.73	3.09	0.44	233

Integration Results for DAD1 C, Sig=254,4 Ref=off

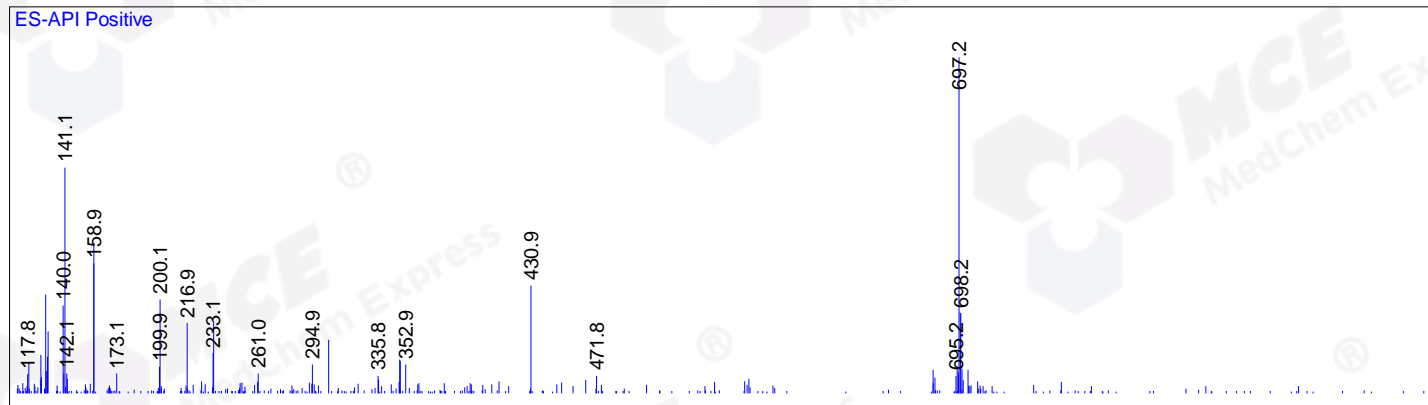
RetTim	Width	Area	Height	Area%	MS (+)
1.57	0.02	1.33	1.38	0.43	ND
1.81	0.02	1.57	1.67	0.51	697
1.90	0.02	293.50	263.83	95.73	681
2.03	0.02	10.21	10.04	3.33	679

Integration Results for MSD1 TIC, MS File

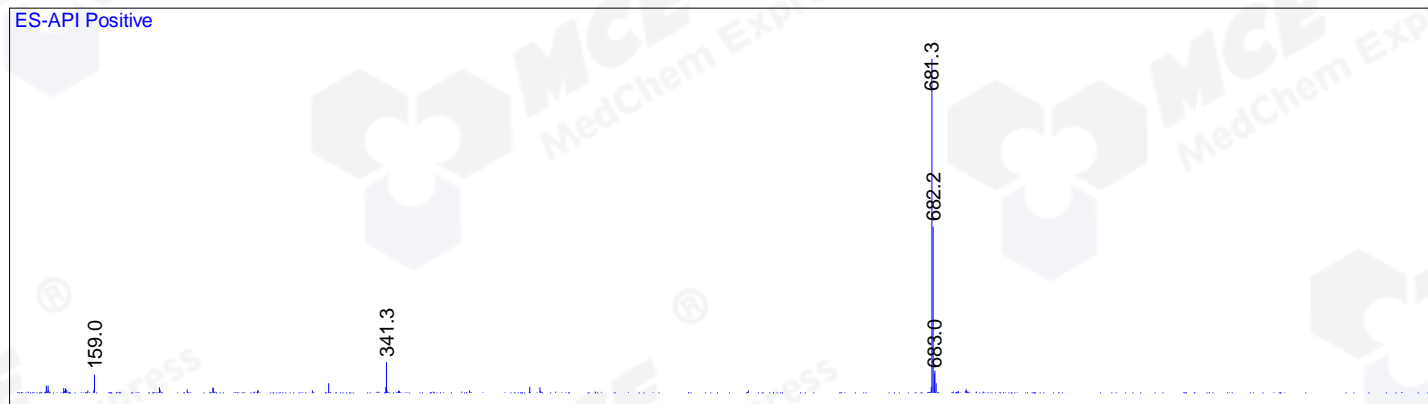
RetTim	Width	Area	Height	Area%	MS (+)
1.83	0.03	29391.82	12774.51	7.33	697

1.91	0.05	294198.69	85387.94	73.35	681
2.04	0.04	77487.64	27874.97	19.32	679

Ret. Time: 1.83 <<<< POSITIVE SPECTRA >>>>



Ret. Time: 1.91



Ret. Time: 2.04

