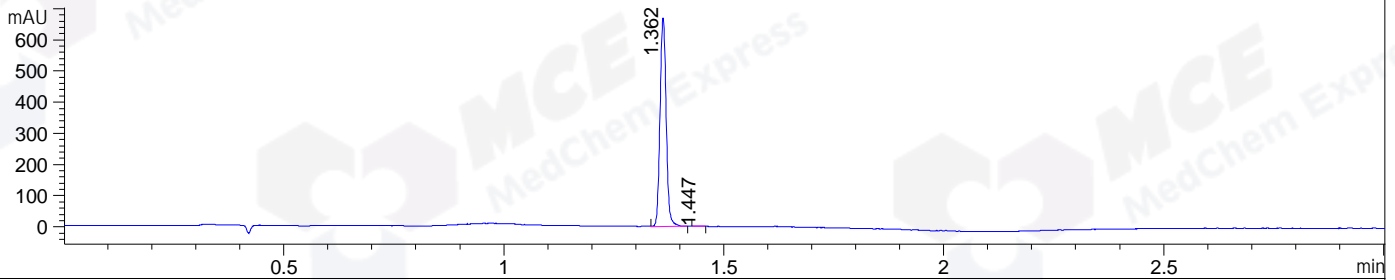
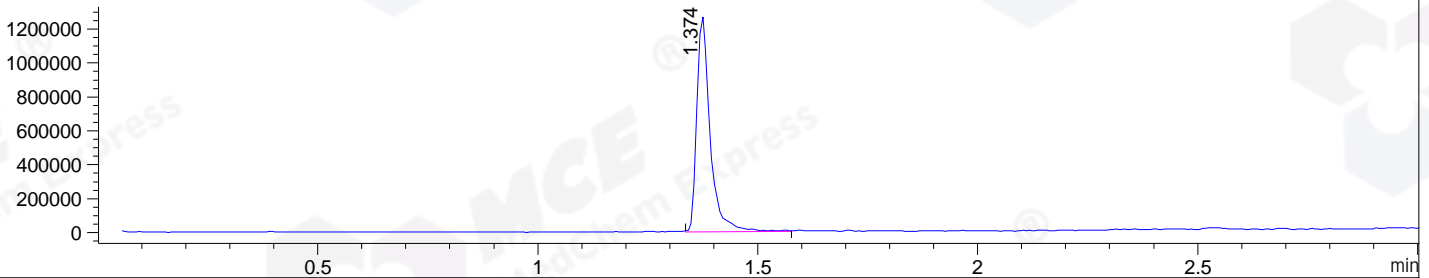


File ..\DATA\2020\20200117\822\BIZ2019-D26-WMX21.D Tgt Mass (CHM):
 Injection Date : 17 Jan 20 1:46 pm +0800 Seq. Line : 30
 Sample Name : BIZ2019-D26-WMX21 Location : P1-A-05
 Acq. Operator : ZJ_1432 Inj : 1
 Spec. Reported : MS Integration Inj Volume : 1 ul
 Acq. Method : D:\Chem32\1\data\2020\20200117\822\1-POS-3MIN.M
 Analysis Method : D:\CHEM32\1\DATA\2020\20200117\822\1-POS-3MIN.M
 Catalog No : HY-16489A
 Method Info : Mobile Phase: A: water(0.01%TFA) B:ACN(0.01%TFA)
 Gradient: 5% to 95%B within 1.3 min
 Flow Rate :1.8ml/min
 Column :SunFire C18, 4.6*50mm,3.5um A-RP-433
 Oven Temperature : 45

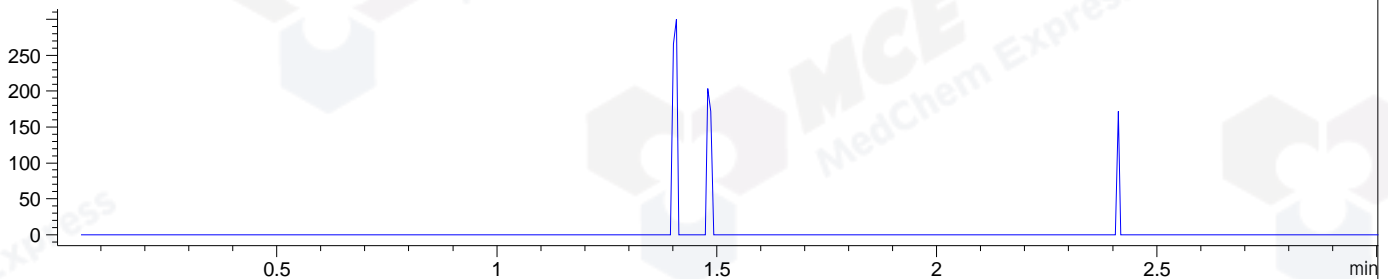
DAD1 B, Sig=214,4 Ref=off



MSD1 TIC, MS File ES-API, Pos, Scan, Frag: 70



Ion 318, MSD1 318, Target Mass 317 +H Positive, EIC=317.7:318.7



Integration Results for DAD1 B, Sig=214,4 Ref=off

RetTim	Width	Area	Height	Area%	MS (+)
1.36	0.02	649.14	670.49	99.78	282
1.45	0.01	1.42	1.64	0.22	282

Integration Results for MSD1 TIC, MS File

RetTim	Width	Area	Height	Area%	MS (+)
1.37	0.03	2709353.00	1269379.00	100.00	282

Ret. Time: 1.37

<<<< POSITIVE SPECTRA >>>>

ES-API Positive



282.2

283.2