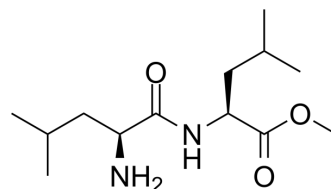


Leucylleucine methyl ester

Cat. No.:	HY-165398
CAS No.:	13022-42-9
Molecular Formula:	C ₁₃ H ₂₆ N ₂ O ₃
Molecular Weight:	258.36
Target:	Others
Pathway:	Others
Storage:	Please store the product under the recommended conditions in the Certificate of Analysis.



BIOLOGICAL ACTIVITY

Description	Leucylleucine methyl ester is a lysosomotropic agent that can be used to eliminate gamma delta T cells in human peripheral blood ^[1] .
-------------	---

CUSTOMER VALIDATION

- Autophagy. 2024 Jul 30.
- PLoS Pathog. 2024 Feb 14;20(2):e1011981.
- Traffic. 2022 May;23(5):238-269.
- Int Immunol. 2021 Jul 23;dxab044.
- bioRxiv. 2024 July 07.

See more customer validations on www.MedChemExpress.com

REFERENCES

[1]. Pechhold K, et al. Human peripheral blood gamma delta T cells are uniformly sensitive to destruction by the lysosomotropic agents leucine methyl ester and leucyl leucine methyl ester. Eur J Immunol. 1993 Feb;23(2):562-5.

Caution: Product has not been fully validated for medical applications. For research use only.

Tel: 609-228-6898

Fax: 609-228-5909

E-mail: tech@MedChemExpress.com

Address: 1 Deer Park Dr, Suite Q, Monmouth Junction, NJ 08852, USA