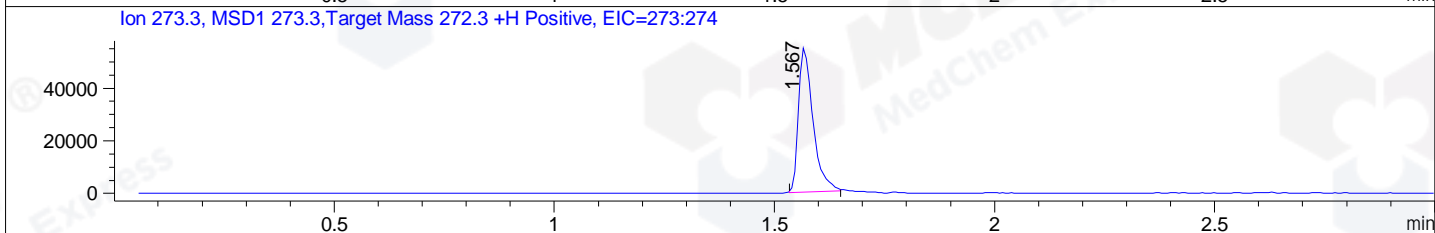
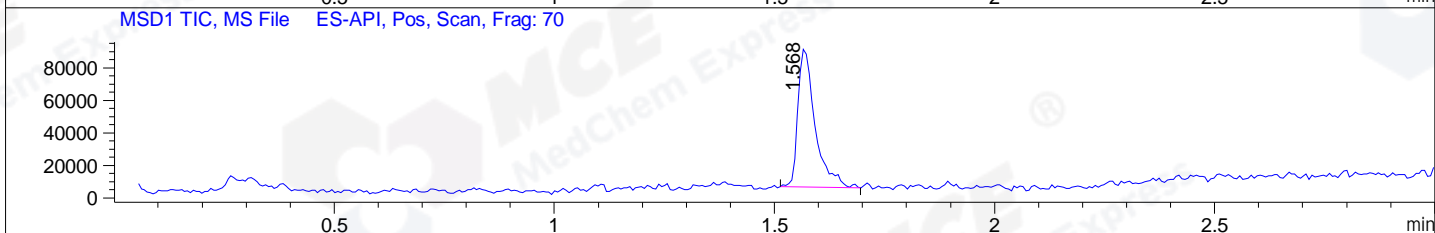
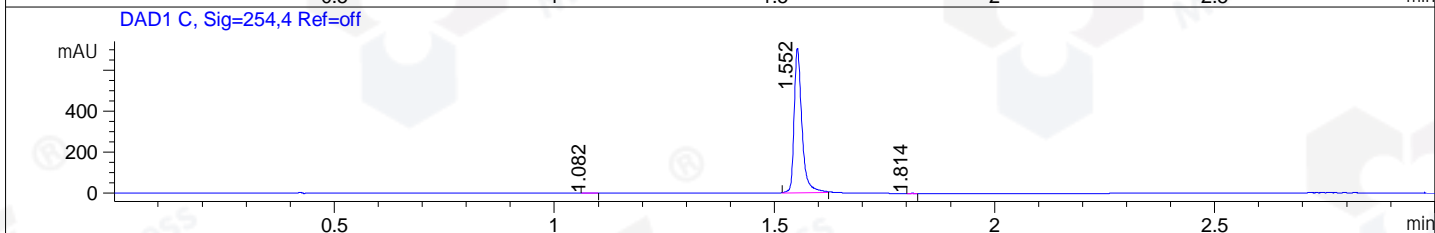
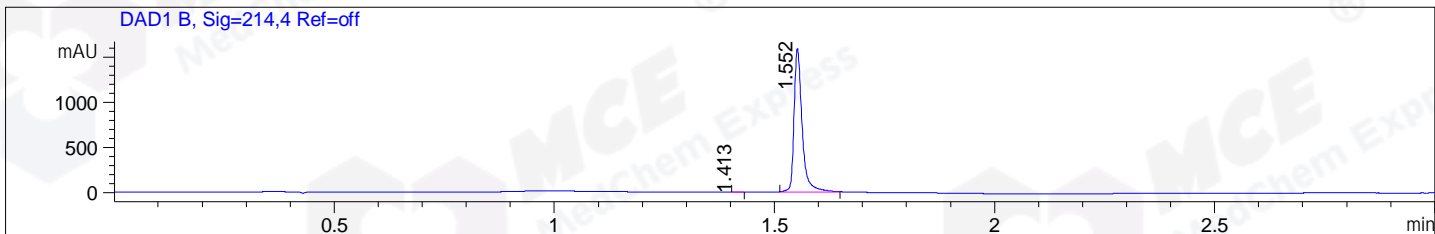


File ..\DATA\2019\20190318\556\CPK2019-315-20951.D Tgt Mass (CHM):  
 Injection Date : 18 Mar 19 1:04 pm +0800 Seq. Line : 42  
 Sample Name : CPK2019-315-20951 Location : P2-E-09  
 Acq. Operator : LQ\_1052 Inj : 1  
 Spec. Reported : MS Integration Inj Volume : 1 ul  
 Acq. Method : D:\Chem32\1\data\2019\20190318\556\1-POS-3MIN-1.M  
 Analysis Method : D:\CHEM32\1\DATA\2019\20190318\556\1-POS-3MIN-1.M  
 Catalog No : HY-16558 Batch#20951  
 Method Info : Mobile Phase: A: water(0.01%TFA) B:ACN(0.01%TFA)  
 Gradient: 5% to 95%B within 1.3 min  
 Flow Rate :1.8ml/min  
 Column :SunFire C18, 4.6\*50mm,3.5um A-RP-314  
 Oven Temperature : 45□



Integration Results for DAD1 B, Sig=214,4 Ref=off

RetTim	Width	Area	Height	Area%	MS (+)
1.41	0.02	0.94	0.82	0.05	ND
1.55	0.02	2040.42	1592.60	99.95	273

Integration Results for DAD1 C, Sig=254,4 Ref=off

RetTim	Width	Area	Height	Area%	MS (+)
1.08	0.02	1.44	1.24	0.16	359
1.55	0.02	871.26	706.18	99.81	273
1.81	0.02	0.19	0.18	0.02	ND

Integration Results for MSD1 TIC, MS File

RetTim	Width	Area	Height	Area%	MS (+)
1.57	0.04	232692.00	85894.45	100.00	273

Ret. Time: 1.57

<<<< POSITIVE SPECTRA >>>>

ES-API Positive

