

Resveratrol (Standard)

Cat. No.:

HY-16561R

Molecular Formula:
 $C_{14}H_{12}O_3$
Batch No.:

287876

Molecular Weight:

228.24

CAS No.:

501-36-0

Package:

Brown glass bottle

Test Date:

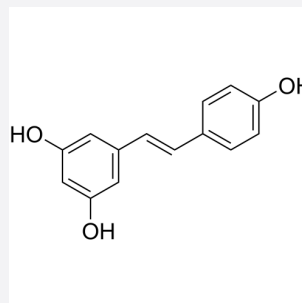
2023-09-08

Storage:

4°C, sealed storage, away from moisture and light

Expiry Date:

2025-09-07 (Stability testing is ongoing to ensure concentration accuracy . The certificate of analysis and product expiry date will be updated upon completion of testing. You can download the latest version from our official website)

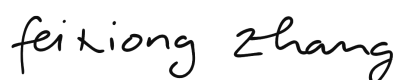

Assay: 99.36%

Assay (%) = (100%-Loss On Drying - Residue on ignition) * Purity

Analytical	Specification	Result
Appearance:	White to off-white (Solid)	Off-white (Solid)
¹ H NMR Spectrum:	Consistent with structure	Consistent with structure
MS:	Consistent with structure	Consistent with structure
Purity:	Not less than 90.0%	99.73% (HPLC)
Loss on drying (LOD):	<3.0%	0.327%
Residue on ignition (ROI):	N/A	0.04%
Traceability:	Fully qualified and calibrated to ISO 17025 requirements. All calibrations utilize institute of metrology traceable weights which are calibrated externally by a qualified ISO 17025 accredited calibration laboratory to metrology institute standards.	



Quality Control



Quality Assurance

