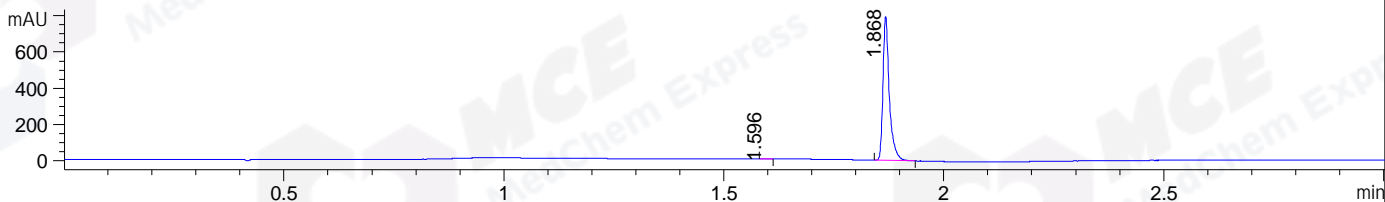
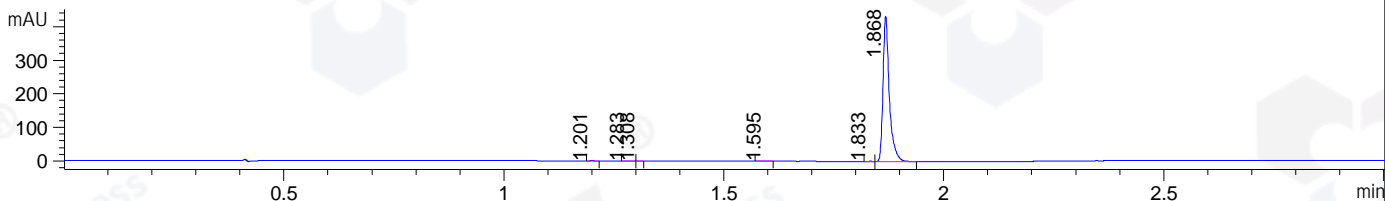


File ..\DATA\2020\20200520\967\CPK2020-519-07611.D Tgt Mass (CHM):  
Injection Date : 20 May 20 11:28 am +0800 Seq. Line : 34  
Sample Name : CPK2020-519-07611 Location : P1-D-03  
Acq. Operator : ZJ\_1432 Inj : 1  
Spec. Reported : MS Integration Inj Volume : 1 ul  
Acq. Method : D:\Chem32\1\data\2020\20200520\967\1-POS-3MIN.M  
Analysis Method : D:\CHEM32\1\DATA\2020\20200520\967\1-POS-3MIN.M  
Catalog No : HY-16576  
Method Info : Mobile Phase: A: water(0.01%TFA) B:ACN(0.01%TFA)  
Gradient: 5% to 95%B within 1.3 min  
Flow Rate :1.8ml/min  
Column :SunFire C18, 4.6\*50mm,3.5um A-RP-607  
Oven Temperature : 45

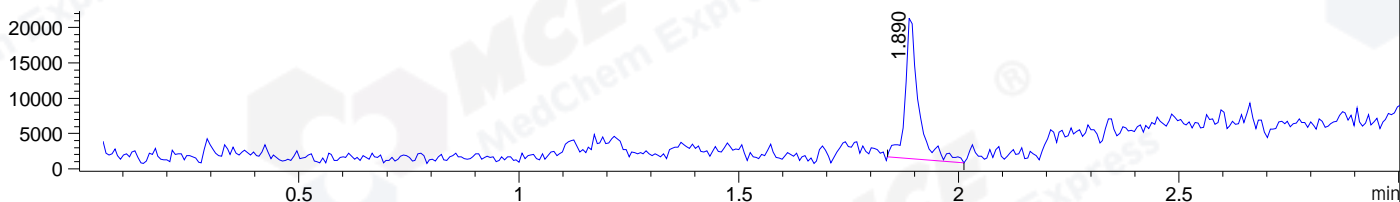
DAD1 B, Sig=214,4 Ref=off



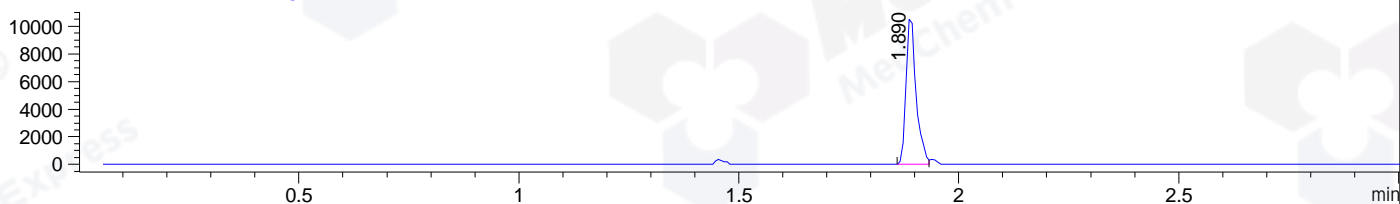
DAD1 C, Sig=254,4 Ref=off



MSD1 TIC, MS File ES-API, Pos, Scan, Frag: 70



Ion 274, MSD1 274, Target Mass 273 +H Positive, EIC=273.7:274.7



Integration Results for DAD1 B, Sig=214,4 Ref=off

RetTim	Width	Area	Height	Area%	MS (+)
1.60	0.02	0.78	0.67	0.10	ND
1.87	0.02	801.82	795.84	99.90	274

Integration Results for DAD1 C, Sig=254,4 Ref=off

RetTim	Width	Area	Height	Area%	MS (+)
1.20	0.01	0.42	0.54	0.10	ND
1.28	0.02	0.67	0.69	0.15	ND
1.31	0.01	0.36	0.53	0.08	ND
1.59	0.02	0.78	0.70	0.18	ND
1.83	0.01	0.48	0.57	0.11	ND
1.87	0.02	435.28	432.93	99.38	274

Integration Results for MSD1 TIC, MS File

RetTim	Width	Area	Height	Area%	MS (+)
1.89	0.04	42627.03	20780.90	100.00	274

Ret. Time: 1.89

<<<< POSITIVE SPECTRA >>>>

ES-API Positive

