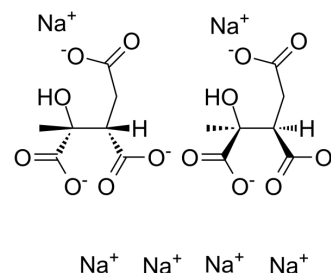


DL-threo-2-methylisocitrate sodium

Cat. No.:	HY-16581A
Molecular Formula:	C ₁₄ H ₁₄ Na ₆ O ₁₄
Molecular Weight:	544.19
Target:	Others
Pathway:	Others
Storage:	4°C, sealed storage, away from moisture * In solvent : -80°C, 6 months; -20°C, 1 month (sealed storage, away from moisture)



SOLVENT & SOLUBILITY

In Vitro

BIOLOGICAL ACTIVITY

Description

DL-threo-2-methylisocitrate is a substrate of isocitrate lyase 1 (ICL1). IC50 value: Target: The Km of purified recombinant ICL1 for threo-D(s)L(s)-isocitrate (ICA) was determined to be 188 μM using Michaelis-Menten non-linear least squares fit, with a kcat of 5.24 s⁻¹. The Km for DL-threo-2-methylisocitrate (MICA) was approximately fourfold higher at 718 μM with a kcat of 1.25 s⁻¹.

CUSTOMER VALIDATION

- Mol Plant Microbe Interact. 2019 Sep;32(9):1148-1161.

See more customer validations on www.MedChemExpress.com

REFERENCES

[1]. Gould TA, et al. Dual role of isocitrate lyase 1 in the glyoxylate and methylcitrate cycles in Mycobacterium tuberculosis. Mol Microbiol. 2006 Aug;61(4):940-7.

Caution: Product has not been fully validated for medical applications. For research use only.

Tel: 609-228-6898

Fax: 609-228-5909

E-mail: tech@MedChemExpress.com

Address: 1 Deer Park Dr, Suite Q, Monmouth Junction, NJ 08852, USA