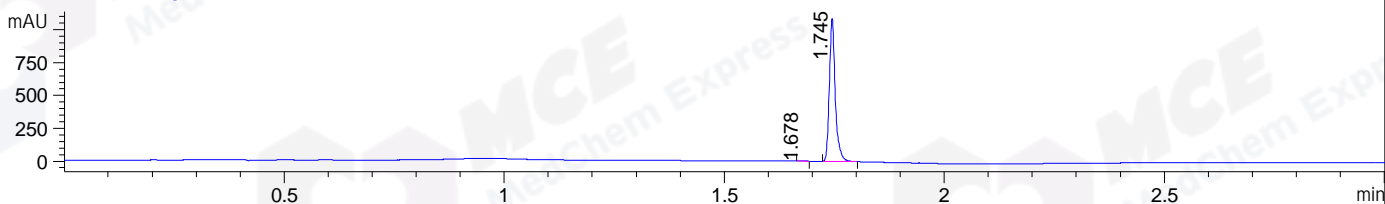
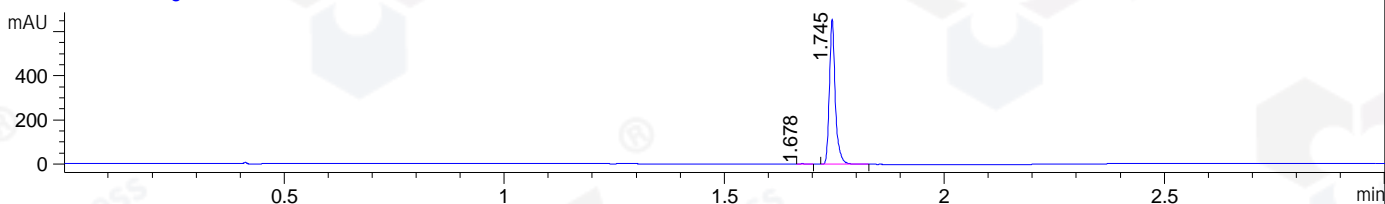


File ..DATA\2020\20200916\1108\CPK2020-915-27286.D Tgt Mass (CHM):
Injection Date : 16 Sep 20 6:56 pm +0800 Seq. Line : 124
Sample Name : CPK2020-915-27286 Location : P1-B-05
Acq. Operator : zyj_1547 Inj : 1
Spec. Reported : MS Integration Inj Volume : 1 ul
Acq. Method : D:\Chem32\1\data\2020\20200916\1108\1-POS-3MIN.M
Analysis Method : D:\CHEM32\1\DATA\2020\20200916\1108\1-POS-3MIN.M
CAS NO. : 1218778-77-8
Method Info : Mobile Phase: A: water(0.01%TFA) B:ACN(0.01%TFA)
Gradient: 5% to 95%B within 1.3 min
Flow Rate :1.8ml/min
Column :SunFire C18, 4.6*50mm,3.5um A-RP-624

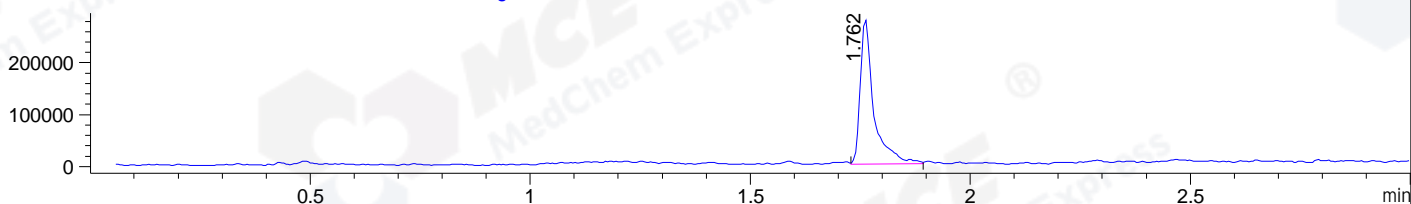
DAD1 B, Sig=214,4 Ref=off



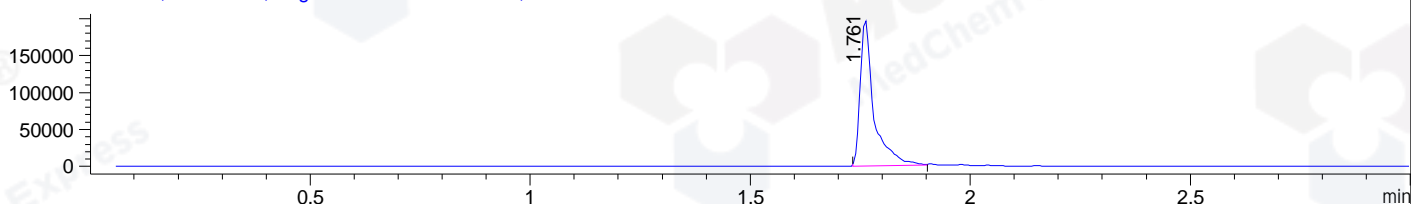
DAD1 C, Sig=254,4 Ref=off



MSD1 TIC, MS File ES-API, Pos, Scan, Frag: 70



Ion 486, MSD1 486, Target Mass 485 +H Positive, EIC=485.7:486.7



Integration Results for DAD1 B, Sig=214,4 Ref=off

RetTim	Width	Area	Height	Area%	MS(+)
1.68	0.01	2.02	2.42	0.20	ND
1.75	0.02	1012.69	1088.73	99.80	486

Integration Results for DAD1 C, Sig=254,4 Ref=off

RetTim	Width	Area	Height	Area%	MS(+)
1.68	0.02	1.92	1.99	0.32	ND
1.75	0.02	608.12	657.59	99.68	486

Integration Results for MSD1 TIC, MS File

RetTim	Width	Area	Height	Area%	MS(+)
1.76	0.03	593184.44	278915.75	100.00	486

Ret. Time: 1.76

<<<< POSITIVE SPECTRA >>>>

ES-API Positive

