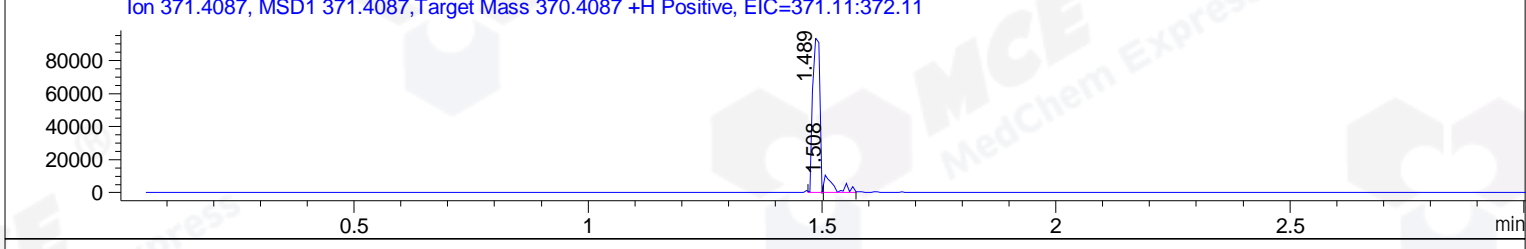
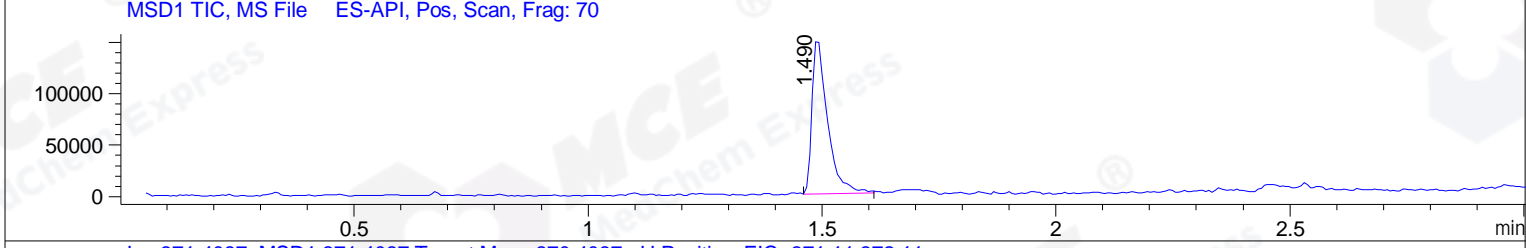
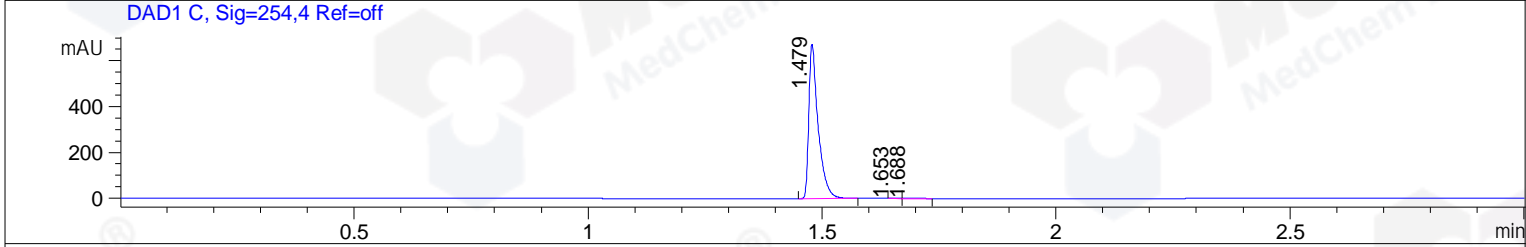
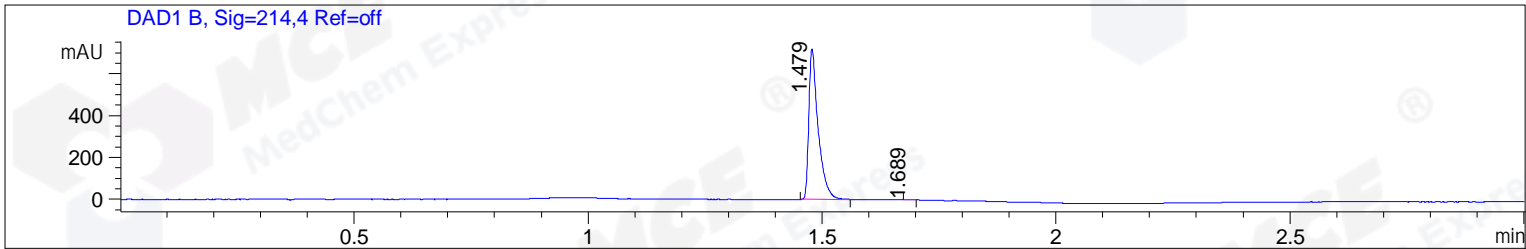


File ..DATA\2019\20191008\720\CPK2019-930-21390-.D Tgt Mass (CHM):
 Injection Date : 8 Oct 19 2:41 pm +0800 Seq. Line : 52
 Sample Name : CPK2019-930-21390 Location : P1-B-05
 Acq. Operator : ZJ_1432 Inj : 1
 Spec. Reported : MS Integration Inj Volume : 0.4 ul
 Acq. Method : D:\Chem32\1\data\2019\20191008\720\1-POS-3MIN.M
 Analysis Method : D:\CHEM32\1\DATA\2019\20191008\720\1-POS-3MIN.M
 Catalog No : HY-16652 Batch# 21390
 Method Info : Mobile Phase: A: water(0.01%TFA) B:ACN(0.01%TFA)
 Gradient: 5% to 95%B within 1.3 min
 Flow Rate :1.8ml/min
 Column :SunFire C18, 4.6*50mm,3.5um A-RP-433
 Oven Temperature : 45



Integration Results for DAD1 B, Sig=214,4 Ref=off

| RetTim | Width | Area | Height | Area% | MS (+) |
|--------|-------|--------|--------|-------|--------|
| 1.48 | 0.02 | 992.77 | 720.23 | 99.86 | 371 |
| 1.69 | 0.01 | 1.35 | 1.56 | 0.14 | ND |

Integration Results for DAD1 C, Sig=254,4 Ref=off

| RetTim | Width | Area | Height | Area% | MS (+) |
|--------|-------|--------|--------|-------|--------|
| 1.48 | 0.02 | 930.54 | 674.39 | 99.51 | 371 |
| 1.65 | 0.02 | 1.27 | 1.02 | 0.14 | ND |
| 1.69 | 0.02 | 3.31 | 2.22 | 0.35 | ND |

Integration Results for MSD1 TIC, MS File

| RetTim | Width | Area | Height | Area% | MS (+) |
|--------|-------|-----------|-----------|--------|--------|
| 1.49 | 0.03 | 345490.44 | 153994.25 | 100.00 | 371 |

Ret. Time: 1.49

<<<< POSITIVE SPECTRA >>>>

ES-API Positive

