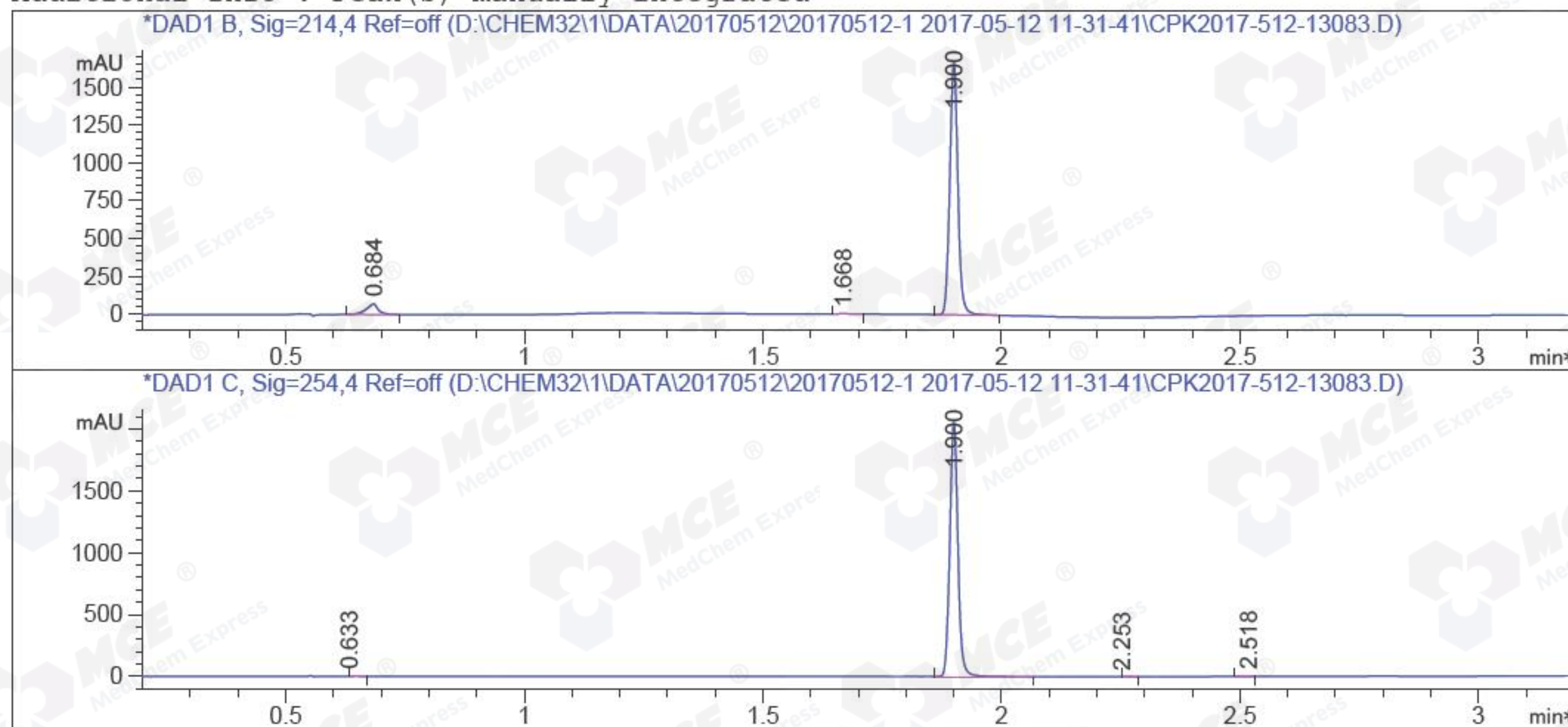


```

=====
Acq. Operator   : CLJ_701                      Seq. Line : 63
Acq. Instrument : LCMS-02                      Location  : P1-C-06
Injection Date  : 5/12/2017 16:26:31          Inj       : 1
                                           Inj Volume: 1.000 µl
Acq. Method    : D:\CHEM32\1\DATA\20170512\20170512-1 2017-05-12 11-31-41\1-POS-3MIN.M
Last changed   : 5/12/2017 11:31:41 by CLJ_701
Analysis Method: D:\CHEM32\1\METHODS\1-POS-3MIN-PROSRSS.M
Last changed   : 5/12/2017 16:33:56 by CLJ_701
                (modified after loading)
Method Info    : Mobile Phase: A: water(0.01%TFA) B:ACN(0.01%TFA)
                Gradient: 5% to 95%B within 1.3 min
                Flow Rate :1.8ml/min
                Column   :SunFire C18, 4.6*50mm,3.5um A-RP-186
                Oven Temperature : 45C

Catalog No     : HY-16702A Batch#13083
                A-RP-186
  
```

Additional Info : Peak(s) manually integrated



Area Percent Report

```

Sorted By      : Signal
Multiplier    : 1.0000
Dilution      : 1.0000
Do not use Multiplier & Dilution Factor with ISTDs
  
```

Signal 1: DAD1 B, Sig=214,4 Ref=off
 Signal has been modified after loading from rawdata file!

Peak #	RetTime [min]	Type	Width [min]	Area [mAU*s]	Height [mAU]	Area %
1	0.684	MM	0.0297	125.01259	70.17200	5.9600
2	1.668	MM	0.0269	5.63866	3.48779	0.2688
3	1.900	MM	0.0196	1966.89087	1673.37903	93.7712

Totals : 2097.54211 1747.03881

Signal 2: DAD1 C, Sig=254,4 Ref=off

Signal has been modified after loading from rawdata file!

Peak #	RetTime [min]	Type	Width [min]	Area [mAU*s]	Height [mAU]	Area %
1	0.633	MM R	0.0143	1.24645	5.59009e-2	0.0513
2	1.900	MM R	0.0196	2429.01880	2068.48315	99.9035
3	2.253	MM R	0.0194	6.94162e-1	1.04109e-1	0.0286
4	2.518	MM R	0.0182	4.05317e-1	3.70432e-1	0.0167

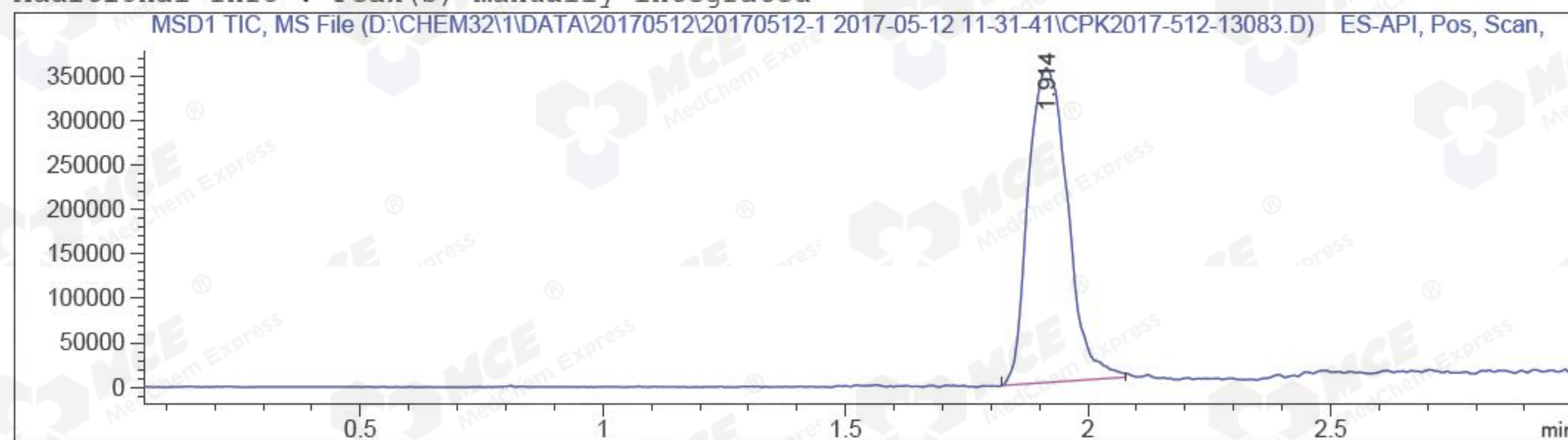
Totals : 2431.36473 2069.01360

*** End of Report ***

=====

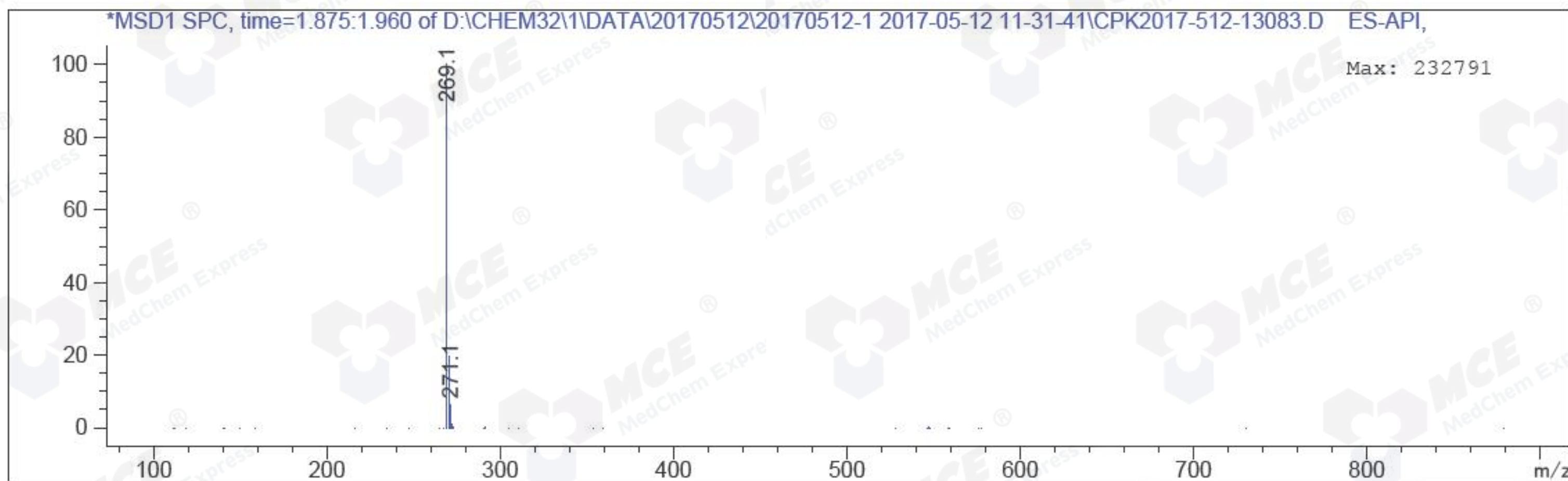
Acq. Operator	: CLJ_701	Seq. Line	: 63
Acq. Instrument	: LCMS-02	Location	: P1-C-06
Injection Date	: 5/12/2017 16:26:31	Inj	: 1
		Inj Volume	: 1.000 µl
Acq. Method	: D:\CHEM32\1\DATA\20170512\20170512-1 2017-05-12 11-31-41\1-POS-3MIN.M		
Last changed	: 5/12/2017 11:31:41 by CLJ_701		
Analysis Method	: D:\CHEM32\1\METHODS\1-POS-3MIN-PROSRSS.M		
Last changed	: 5/12/2017 16:35:11 by CLJ_701 (modified after loading)		
Method Info	: Mobile Phase: A: water(0.01%TFA) B:ACN(0.01%TFA)		
	: Gradient: 5% to 95%B within 1.3 min		
	: Flow Rate :1.8ml/min		
	: Column :SunFire C18, 4.6*50mm,3.5um A-RP-186		
	: Oven Temperature : 45C		
Catalog No	: HY-16702A Batch#13083		
	: A-RP-186		

Additional Info : Peak(s) manually integrated



MS Signal: MSD1 TIC, MS File, ES-API, Pos, Scan, Frag: 70
Spectra averaged over upper half of peaks.
Noise Cutoff: 1000 counts.
Reportable Ion Abundance: > 10%.

Retention Time (MS)	MS Area	Mol. Weight or Ion
1.914	1994973	270.10 I
		269.15 I



*** End of Report ***