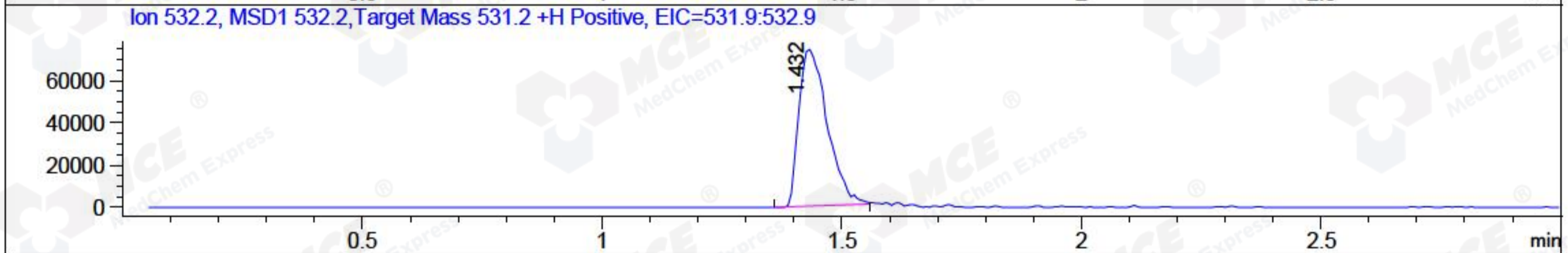
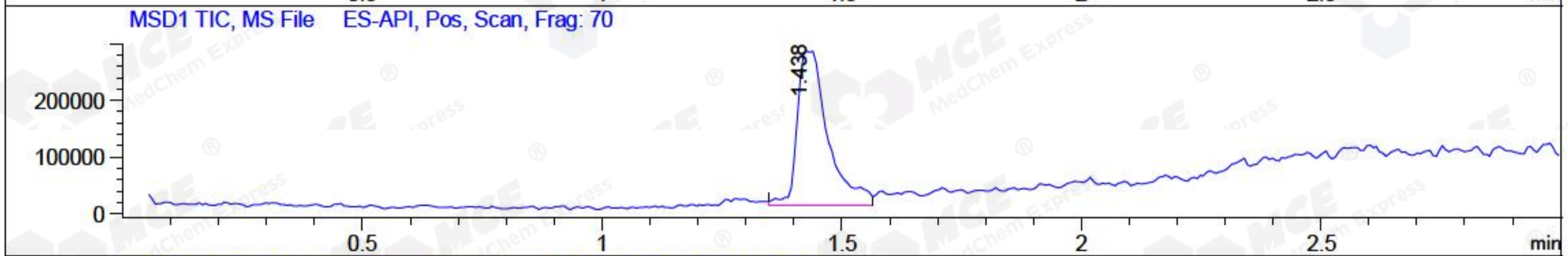
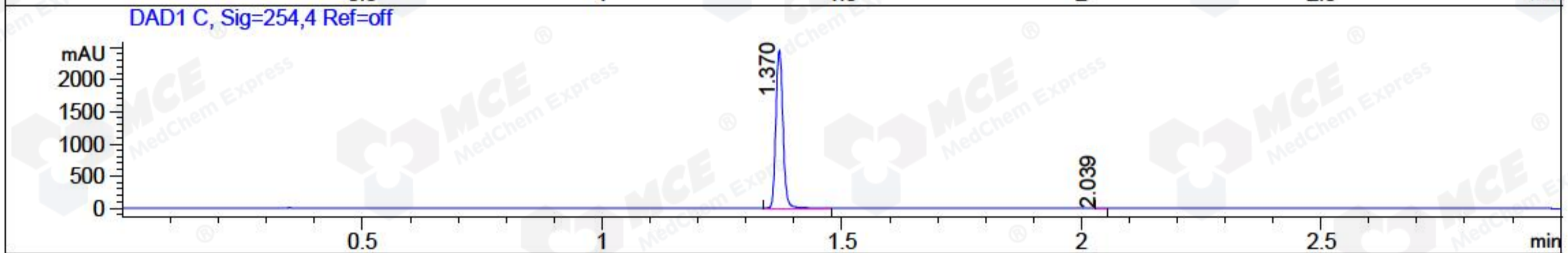
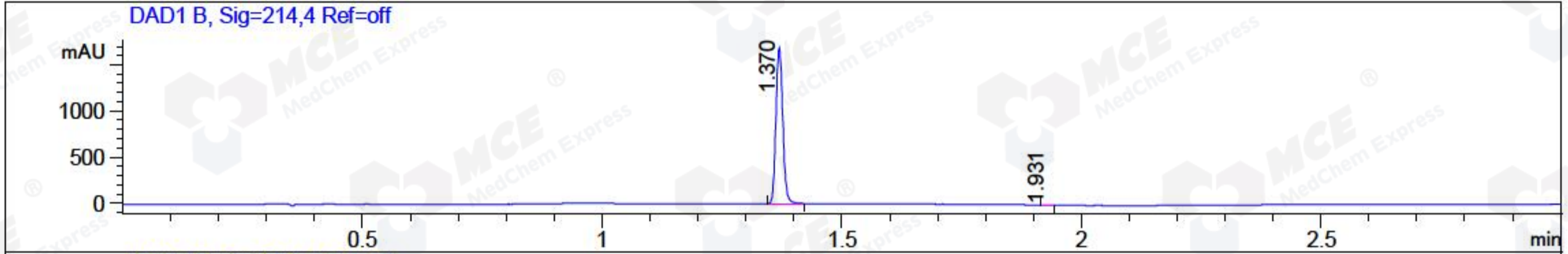


File ..1\DATA\2018\20180914\399\BIZ2018-913-CXL1.D Tgt Mass (CHM):
 Injection Date : 14 Sep 18 1:23 pm +0800 Seq. Line : 4
 Sample Name : BIZ2018-913-CXL1 Location : P1-C-02
 Acq. Operator : LQ_1052 Inj : 1
 Spec. Reported : MS Integration Inj Volume : 1 ul
 Acq. Method : D:\Chem32\1\data\2018\20180914\399\1-POS-3MIN-1.M
 Analysis Method : D:\CHEM32\1\DATA\2018\20180914\399\1-POS-3MIN-1.M
 Catalog No : HY-16727 Batch#32700 A-RP-314
 Method Info : Mobile Phase: A: water(0.01%TFA) B:ACN(0.01%TFA)
 Gradient: 5% to 95%B within 1.3 min
 Flow Rate :1.8ml/min
 Column :SunFire C18, 4.6*50mm,3.5um A-RP-314
 Oven Temperature : 45□



Integration Results for DAD1 B, Sig=214,4 Ref=off

RetTim	Width	Area	Height	Area%	MS (+)
1.37	0.02	1698.07	1696.74	99.95	267
1.93	0.01	0.89	1.06	0.05	427

Integration Results for DAD1 C, Sig=254,4 Ref=off

RetTim	Width	Area	Height	Area%	MS (+)
1.37	0.02	2522.51	2459.00	99.97	267
2.04	0.02	0.85	0.88	0.03	427

Integration Results for MSD1 TIC, MS File

RetTim	Width	Area	Height	Area%	MS (+)
1.44	0.07	1212652.13	273794.75	100.00	532

Ret. Time: 1.44

<<<< POSITIVE SPECTRA >>>>

ES-API Positive

