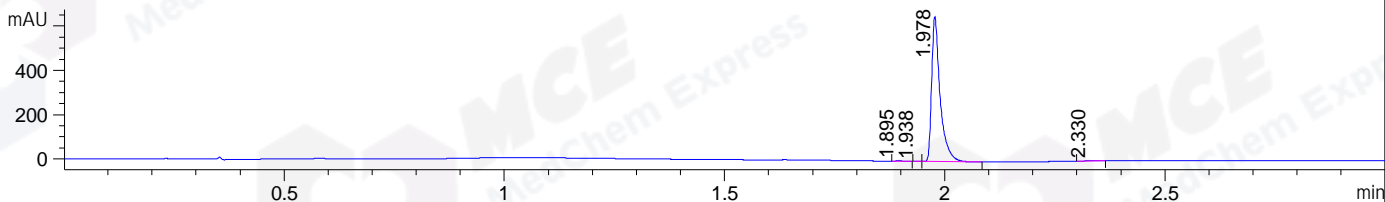
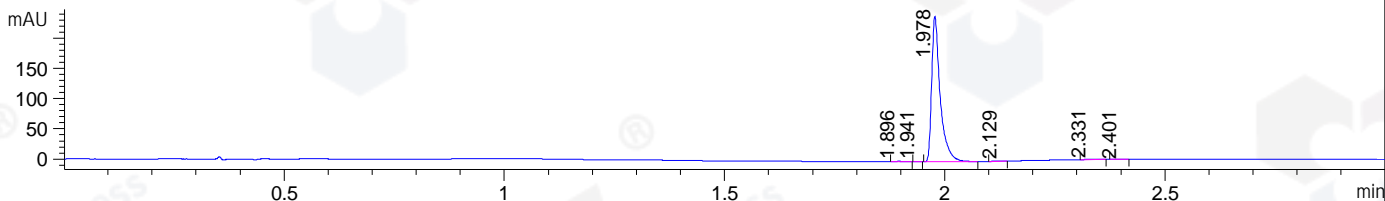


File ..A\2019\20190708\20190708\BIZ2019-708-CXL1.D Tgt Mass (CHM):
 Injection Date : 8 Jul 19 8:46 pm +0800 Seq. Line : 67
 Sample Name : BIZ2019-708-CXL1 Location : P2-F-06
 Acq. Operator : SYSTEM Inj : 1
 Spec. Reported : MS Integration Inj Volume : 1 ul
 Acq. Method : D:\LCMS03\Data\20190708\20190708\1-POS-3MIN.M
 Analysis Method : D:\CHEM32\1\DATA\2019\20190708\20190708\1-POS-3MIN.M
 Catalog No : HY-16737 Batch#43208
 Method Info : Mobile Phase: A: water(0.01%TFA) B:ACN(0.01%TFA)
 Gradient: 5% to 95%B within 1.3 min
 Flow Rate :1.8ml/min
 Column :SunFire C18, 4.6*50mm,3.5um A-RP-446
 Oven Temperature : 45C

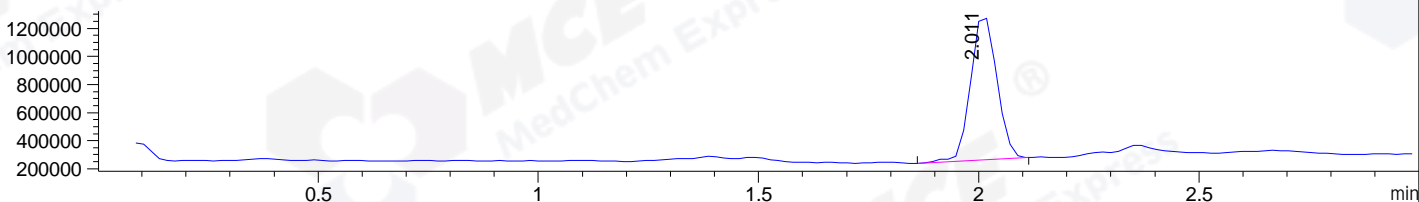
DAD1 A, Sig=214,4 Ref=off



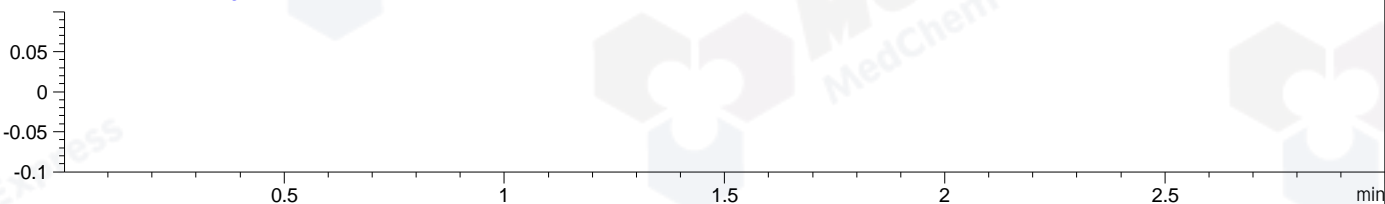
DAD1 B, Sig=254,4 Ref=off



MSD1 TIC, MS File ES-API, Pos, Scan, Frag: 70



Ion 1, MSD1 1, Target Mass 0 +H Positive, EIC=0.7:1.7



Integration Results for DAD1 A, Sig=214,4 Ref=off

RetTim	Width	Area	Height	Area%	MS (+)
1.90	0.02	3.18	2.87	0.36	145
1.94	0.01	0.12	0.19	0.01	145
1.98	0.02	877.43	653.49	99.18	385
2.33	0.03	3.99	2.56	0.45	145

Integration Results for DAD1 B, Sig=254,4 Ref=off

RetTim	Width	Area	Height	Area%	MS (+)
1.90	0.02	1.03	0.96	0.31	145
1.94	0.01	0.14	0.19	0.04	145
1.98	0.02	323.23	240.15	98.95	385
2.13	0.02	0.12	0.09	0.04	145
2.33	0.03	1.98	1.17	0.61	145
2.40	0.02	0.15	0.11	0.05	145

Integration Results for MSD1 TIC, MS File

RetTim	Width	Area	Height	Area%	MS (+)
--------	-------	------	--------	-------	--------

-----|-----|-----|-----|-----|-----|
2.01 0.07 4279791.00 1041536.13 100.00 385

Ret. Time: 2.01

<<<< POSITIVE SPECTRA >>>>

ES-API Positive

