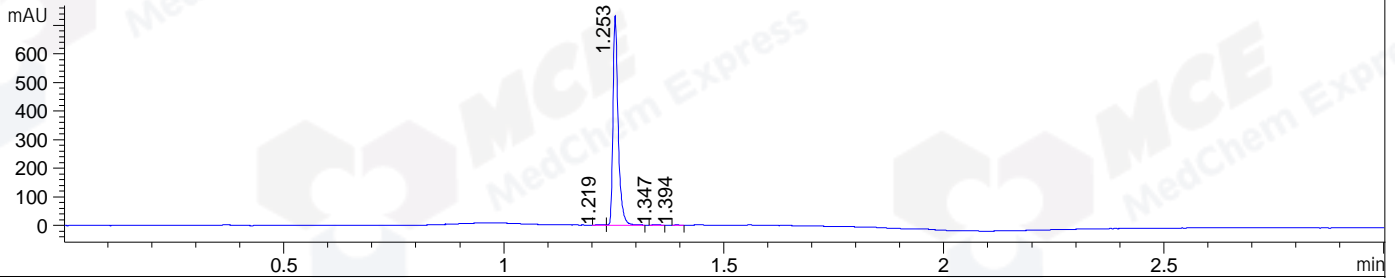
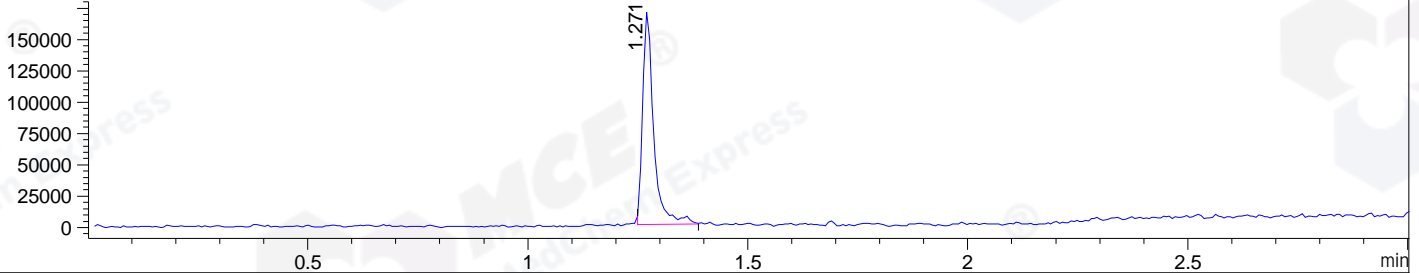


File ..DATA\2020\20200510\951\CPK2020-509-26697-.D Tgt Mass (CHM):  
Injection Date : 10 May 20 11:13 pm +0800 Seq. Line : 70  
Sample Name : CPK2020-509-26697 Location : P2-E-07  
Acq. Operator : ZJ\_1432 Inj : 1  
Spec. Reported : MS Integration Inj Volume : 0.25 ul  
Acq. Method : D:\Chem32\1\data\2020\20200510\951\1-POS-3MIN.M  
Analysis Method : D:\CHEM32\1\DATA\2020\20200510\951\1-POS-3MIN.M  
Catalog No : HY-16781  
Method Info : Mobile Phase: A: water(0.01%TFA) B:ACN(0.01%TFA)  
Gradient: 5% to 95%B within 1.3 min  
Flow Rate :1.8ml/min  
Column :SunFire C18, 4.6\*50mm,3.5um A-RP-607  
Oven Temperature : 45

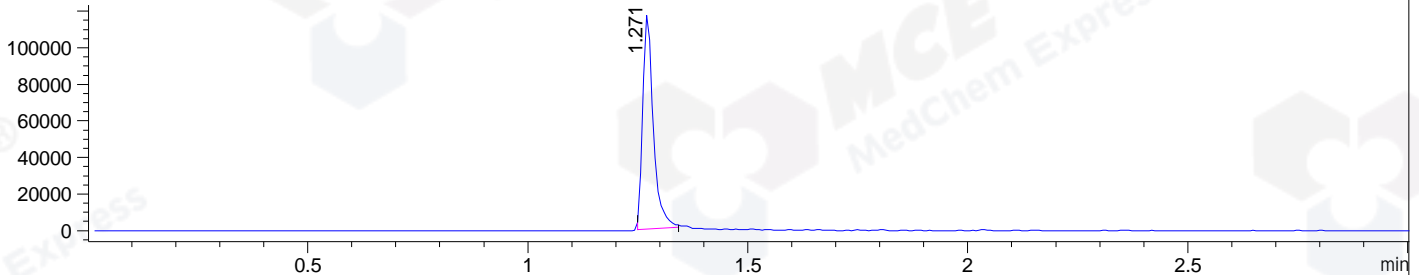
DAD1 B, Sig=214,4 Ref=off



MSD1 TIC, MS File ES-API, Pos, Scan, Frag: 70



Ion 492, MSD1 492, Target Mass 491 +H Positive, EIC=491.7:492.7



Integration Results for DAD1 B, Sig=214,4 Ref=off

RetTim	Width	Area	Height	Area%	MS (+)
1.22	0.01	1.34	1.63	0.22	ND
1.25	0.01	600.69	734.27	99.45	492
1.35	0.02	1.23	1.02	0.20	492
1.39	0.01	0.72	1.01	0.12	492

Integration Results for MSD1 TIC, MS File

RetTim	Width	Area	Height	Area%	MS (+)
1.27	0.03	296869.75	170505.92	100.00	492

Ret. Time: 1.27

<<<< POSITIVE SPECTRA >>>>

ES-API Positive

