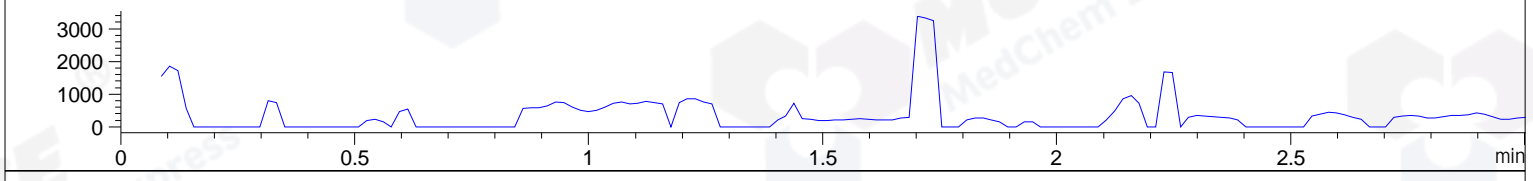
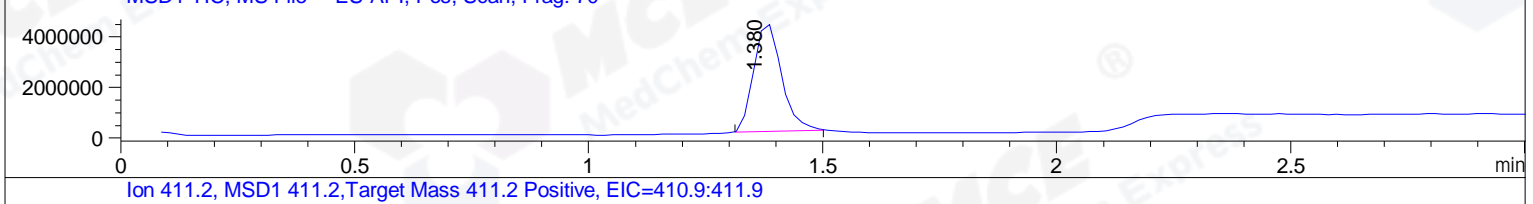
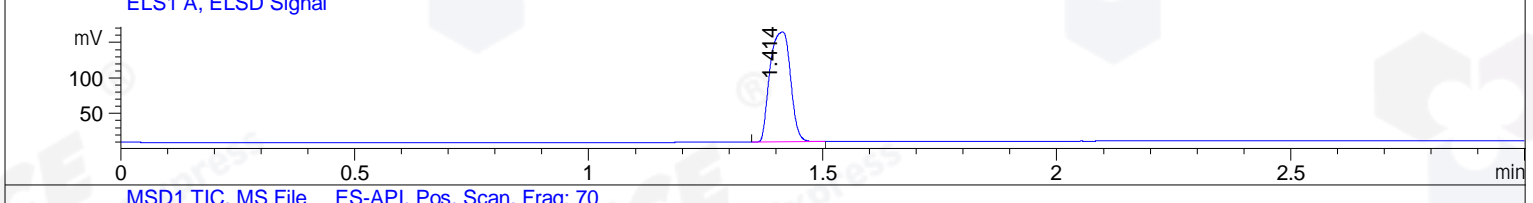
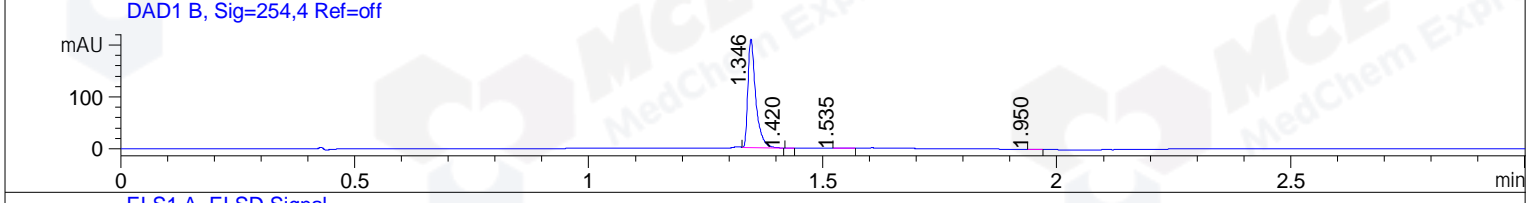
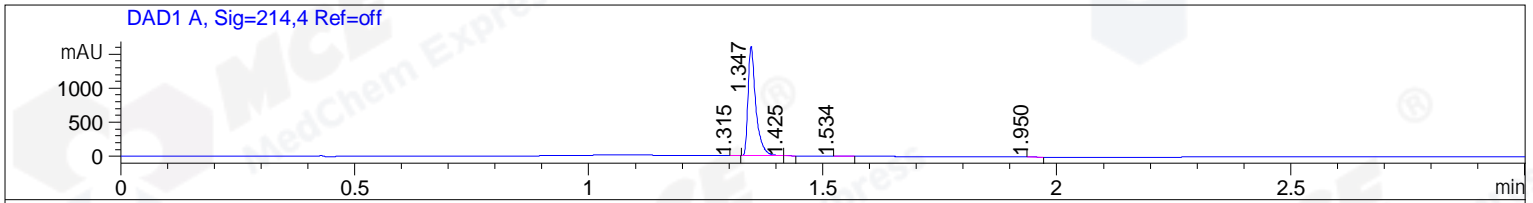


File ..3\Data\20171017\20171017\BIZ2017-017-WYQ6.D Tgt Mass (CHM):  
 Injection Date : 17 Oct 17 1:07 pm +0800 Seq. Line : 54  
 Sample Name : BIZ2017-017-WYQ6 Location : P1-D-10  
 Acq. Operator : SYSTEM Inj : 1  
 Spec. Reported : MS Integration Inj Volume : 1 ul  
 Acq. Method : D:\LCMS03\Data\20171017\20171017\1-POS-3MIN.M  
 Analysis Method : D:\LCMS03\Data\20171017\20171017\1-POS-3MIN.M  
 Catalog No : HY-16781 Batch#26697  
 Method Info : Mobile Phase: A: water(0.01%TFA) B:ACN(0.01%TFA)  
 Gradient: 5% to 95%B within 1.3 min  
 Flow Rate :1.8ml/min  
 Column :SunFire C18, 4.6\*50mm,3.5um A-RP-186  
 Oven Temperature : 45C



Integration Results for DAD1 A, Sig=214,4 Ref=off

RetTim	Width	Area	Height	Area%	MS (+)
1.31	0.01	2.17	2.98	0.12	492
1.35	0.02	1844.88	1592.73	99.68	492
1.43	0.01	1.41	1.92	0.08	492
1.53	0.01	1.03	1.20	0.06	130
1.95	0.01	1.27	1.42	0.07	130

Integration Results for DAD1 B, Sig=254,4 Ref=off

RetTim	Width	Area	Height	Area%	MS (+)
1.35	0.02	241.14	208.26	99.63	492
1.42	0.01	0.16	0.13	0.07	492
1.53	0.01	0.25	0.27	0.10	130
1.95	0.01	0.47	0.56	0.20	130

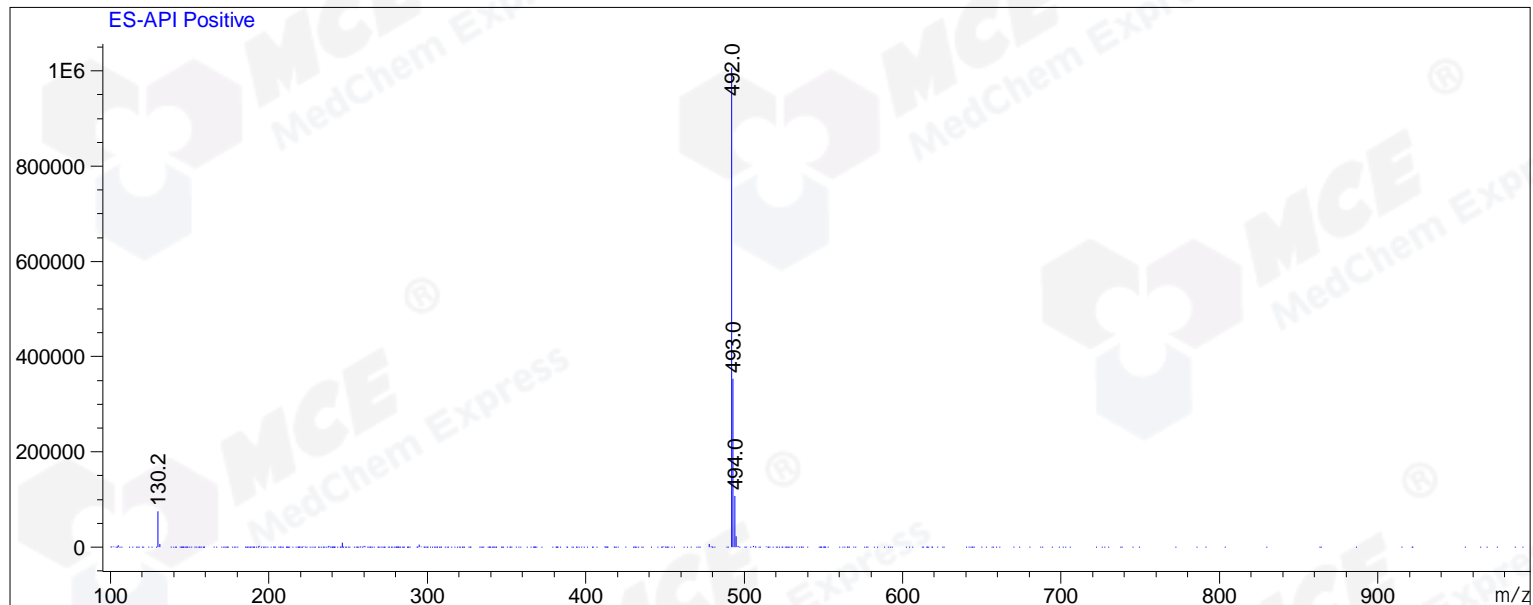
Integration Results for MSD1 TIC, MS File

RetTim	Width	Area	Height	Area%	MS (+)
--------	-------	------	--------	-------	--------

1.38 0.07 17682340.00 4378787.50 100.00 492

Ret. Time: 1.38

<<<< POSITIVE SPECTRA >>>>



\*\*\* End of Report \*\*\*