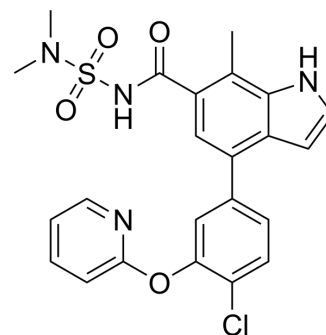


## CAM2602

Cat. No.:	HY-168022
Molecular Formula:	C <sub>23</sub> H <sub>21</sub> ClN <sub>4</sub> O <sub>4</sub> S
Molecular Weight:	484.96
Target:	Others
Pathway:	Others
Storage:	Please store the product under the recommended conditions in the Certificate of Analysis.



## BIOLOGICAL ACTIVITY

### Description

CAM2602 is an Aurora A-TPX2 interaction inhibitor that has a binding affinity of 19 nM to Aurora A. CAM2602 can inhibit the growth of pancreatic cancer cells. In solid tumor transplant models, CAM2602 can increase the proportion of PH3 positive cells while reducing the proportion of P-Thr288 Aurora A positive cells, thereby inhibiting tumor growth<sup>[1]</sup>.

## REFERENCES

[1]. Stockwell SR, et al. Selective Aurora A-TPX2 Interaction Inhibitors Have In Vivo Efficacy as Targeted Antimitotic Agents. *J Med Chem.* 2024 Sep 12;67(17):15521-15536.

**Caution: Product has not been fully validated for medical applications. For research use only.**

Tel: 609-228-6898

Fax: 609-228-5909

E-mail: tech@MedChemExpress.com

Address: 1 Deer Park Dr, Suite Q, Monmouth Junction, NJ 08852, USA