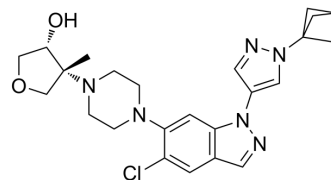


## LRRK2-IN-15

Cat. No.:	HY-168041
Molecular Formula:	C <sub>24</sub> H <sub>29</sub> ClN <sub>6</sub> O <sub>2</sub>
Molecular Weight:	468.98
Target:	LRRK2; BCRP
Pathway:	Autophagy; Membrane Transporter/Ion Channel
Storage:	Please store the product under the recommended conditions in the Certificate of Analysis.



### BIOLOGICAL ACTIVITY

#### Description

LRRK2-IN-15 is an LRRK2 inhibitor. The IC<sub>50</sub> value for PBMC cells is 5 nM, and the IC<sub>50</sub> value for BCRP is 1.5 μM. LRRK2-IN-15 can be used for research on Parkinson's disease<sup>[1]</sup>.

### REFERENCES

[1]. Logan KM, et al. Discovery and Optimization of N-Heteroaryl Indazole LRRK2 Inhibitors. J Med Chem. 2024 Sep 4.

**Caution: Product has not been fully validated for medical applications. For research use only.**

Tel: 609-228-6898

Fax: 609-228-5909

E-mail: tech@MedChemExpress.com

Address: 1 Deer Park Dr, Suite Q, Monmouth Junction, NJ 08852, USA