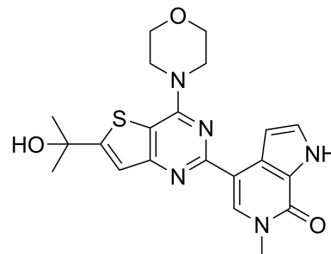


## BET-IN-27

Cat. No.:	HY-168628
CAS No.:	3054869-29-0
Molecular Formula:	C <sub>21</sub> H <sub>23</sub> N <sub>5</sub> O <sub>3</sub> S
Molecular Weight:	425.5
Target:	Epigenetic Reader Domain
Pathway:	Epigenetics
Storage:	Please store the product under the recommended conditions in the Certificate of Analysis.



## BIOLOGICAL ACTIVITY

### Description

BET-IN-27 (compound 6C) is an oral BET inhibitor with the IC<sub>50</sub> values of 3.3 nM (BRD4-BD2) 3.4 nM (BRD4-BD1) 4.1 nM (BRD2-BD1) 20.4 nM (BRD3-BD1) and 42.0 nM (BRDT-BD1), respectively. BET-IN-27 shows anti-proliferative activity<sup>[1]</sup>.

## REFERENCES

[1]. Ran K, Li Y, Zhang YM, et al. Discovery and optimization of novel 4-morpholinothieno[3,2-d]pyrimidine derivatives as potent BET inhibitors for cancer therapy. Bioorg Chem.

**Caution: Product has not been fully validated for medical applications. For research use only.**

Tel: 609-228-6898

Fax: 609-228-5909

E-mail: tech@MedChemExpress.com

Address: 1 Deer Park Dr, Suite Q, Monmouth Junction, NJ 08852, USA