

File ..\2018\20181114\20181114\CPK2018-N14-16511.D Tgt Mass (CHM):

Injection Date : 14 Nov 18 10:33 am +0800 Seq. Line : 28

Sample Name : CPK2018-N14-16511 Location : P1-D-03

Acq. Operator : SYSTEM Inj : 1

Spec. Reported : MS Integration Inj Volume : 5 ul

Acq. Method : D:\LCMS03\Data\2018\20181114\20181114\1-POS-3MIN.M

Analysis Method : D:\LCMS03\Data\2018\20181114\20181114\1-POS-3MIN.M

Catalog No : HY-16904 Batch#16511

Method Info : Mobile Phase: A: water(0.01%TFA) B:ACN(0.01%TFA)

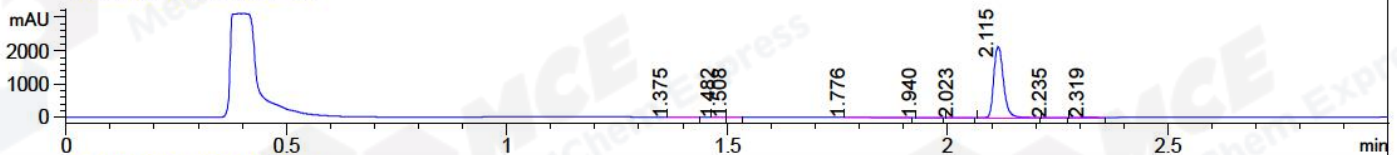
Gradient: 5% to 95%B within 1.3 min

Flow Rate :1.8ml/min

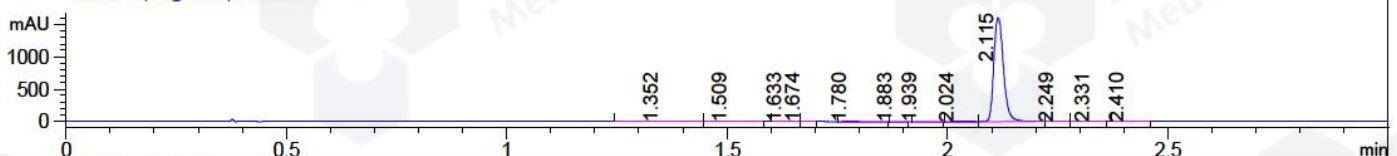
Column :SunFire C18, 4.6\*50mm,3.5um A-RP-186

Oven Temperature : 45C

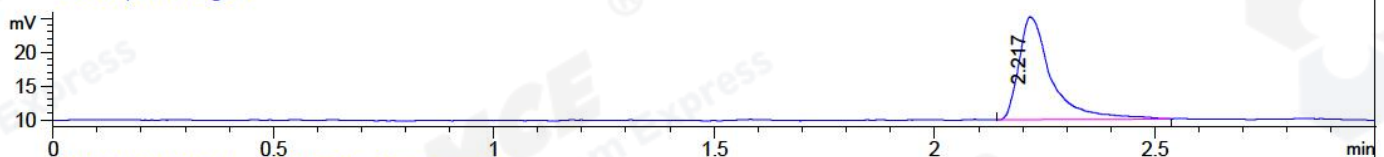
DAD1 A, Sig=214,4 Ref=off



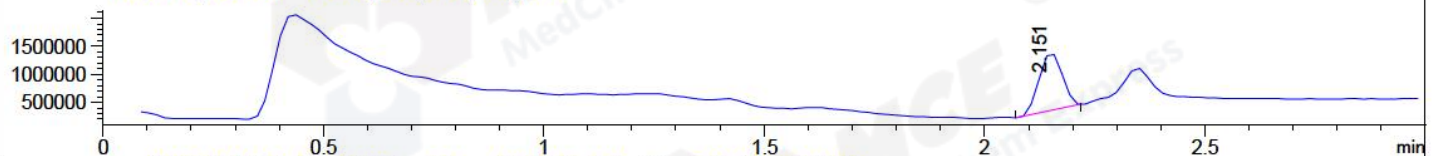
DAD1 B, Sig=254,4 Ref=off



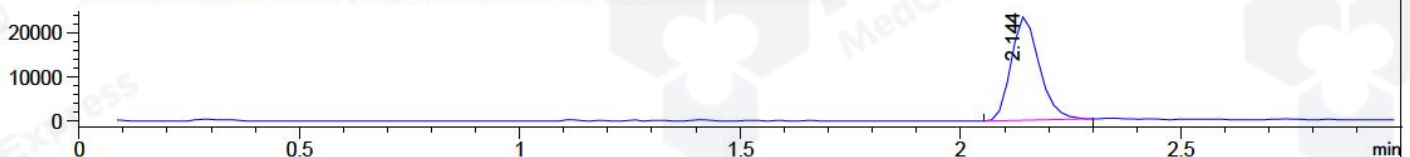
ELS1 A, ELSD Signal



MSD1 TIC, MS File ES-API, Pos, Scan, Frag: 70



Ion 434.2946, MSD1 434.2946, Target Mass 433.2946 +H Positive, EIC=433.99:434.99



## Integration Results for DAD1 A, Sig=214,4 Ref=off

RetTim	Width	Area	Height	Area%	MS (+)
1.38	0.05	2.28	0.52	0.07	157
1.48	0.02	0.69	0.70	0.02	157
1.51	0.02	2.14	1.66	0.07	157
1.78	0.06	2.21	0.51	0.07	157
1.94	0.03	1.45	0.69	0.04	157
2.02	0.03	8.75	5.30	0.27	416
2.11	0.02	3234.07	2117.66	99.22	889
2.23	0.03	1.52	0.86	0.05	416
2.32	0.03	6.53	3.28	0.20	416

## Integration Results for DAD1 B, Sig=254,4 Ref=off

RetTim	Width	Area	Height	Area%	MS (+)
1.35	0.04	4.11	1.27	0.17	157
1.51	0.03	1.32	0.56	0.05	157
1.63	0.02	1.05	0.75	0.04	157
1.67	0.02	0.13	0.11	0.01	157
1.78	0.03	1.55	0.75	0.06	157

1.88	0.02	0.42	0.28	0.02	157
1.94	0.03	0.88	0.48	0.04	157
2.02	0.03	10.23	5.01	0.42	416
2.11	0.02	2435.07	1604.18	99.10	889
2.25	0.03	0.35	0.19	0.01	416
2.33	0.03	1.07	0.41	0.04	416
2.41	0.04	1.11	0.40	0.05	416

## Integration Results for ELS1 A, ELSD Signal

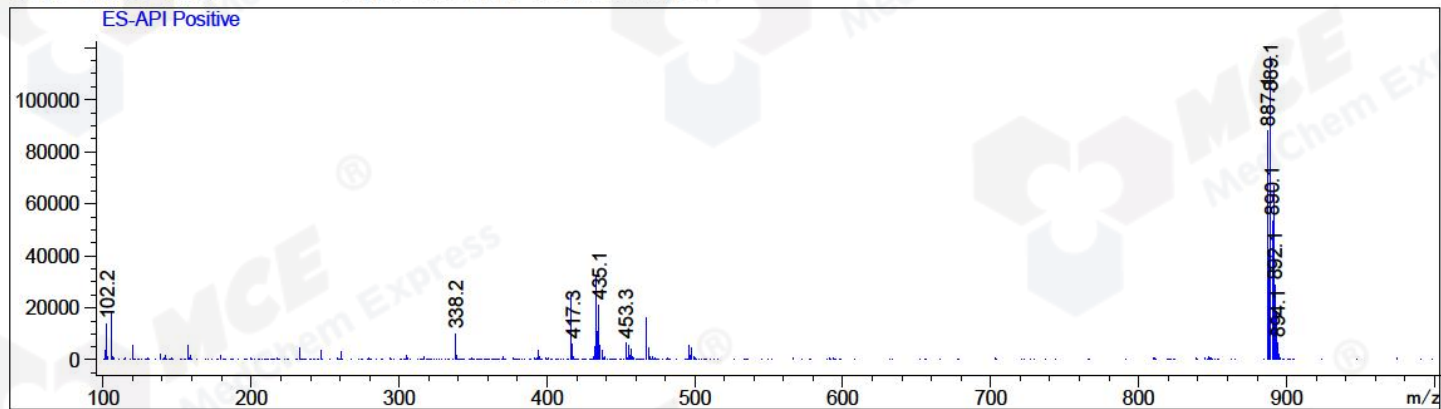
RetTim	Width	Area	Height	Area%	MS (+)
2.22	0.07	78.14	15.23	100.00	416

## Integration Results for MSD1 TIC, MS File

RetTim	Width	Area	Height	Area%	MS (+)
2.15	0.06	3792169.50	1031267.19	100.00	889

Ret. Time: 2.15

<<<< POSITIVE SPECTRA >>>>



\*\*\* End of Report \*\*\*