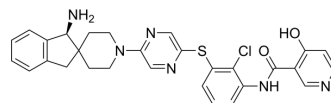


## SHP2-IN-32

Cat. No.:	HY-169111
CAS No.:	3043685-80-6
Molecular Formula:	C <sub>29</sub> H <sub>27</sub> ClN <sub>6</sub> O <sub>2</sub> S
Molecular Weight:	559.08
Target:	SHP2
Pathway:	Protein Tyrosine Kinase/RTK
Storage:	Please store the product under the recommended conditions in the Certificate of Analysis.



### BIOLOGICAL ACTIVITY

Description	SHP2-IN-32 (compound C6) is an orally active, allosteric SHP2 inhibitor with an IC <sub>50</sub> value of 0.13 nM. SHP2-IN-32 exhibits antitumor activity <sup>[1]</sup> .
IC <sub>50</sub> & Target	IC <sub>50</sub> :0.13 nM (SHP2) <sup>[1]</sup> .

### REFERENCES

[1]. Lv X, et al. Discovery of novel substituted pyridine carboxamide derivatives as potent allosteric SHP2 inhibitors. Eur J Med Chem. 2024 Sep 5;279:116830.

**Caution: Product has not been fully validated for medical applications. For research use only.**

Tel: 609-228-6898

Fax: 609-228-5909

E-mail: tech@MedChemExpress.com

Address: 1 Deer Park Dr, Suite Q, Monmouth Junction, NJ 08852, USA