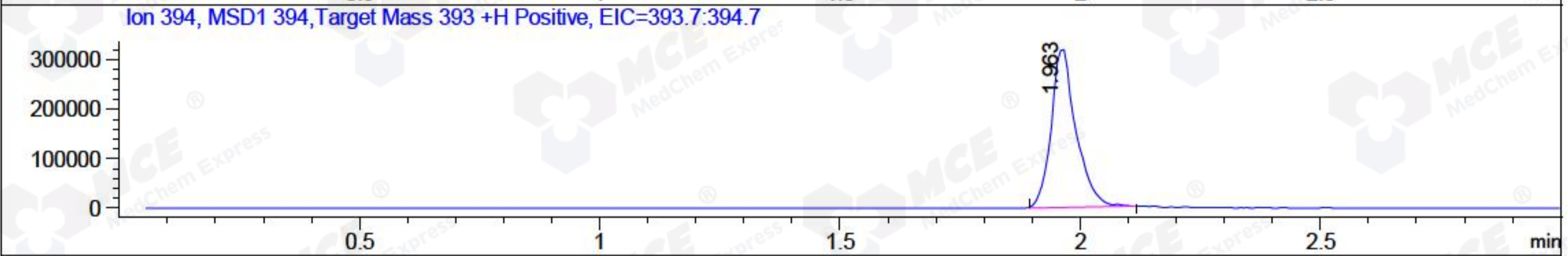
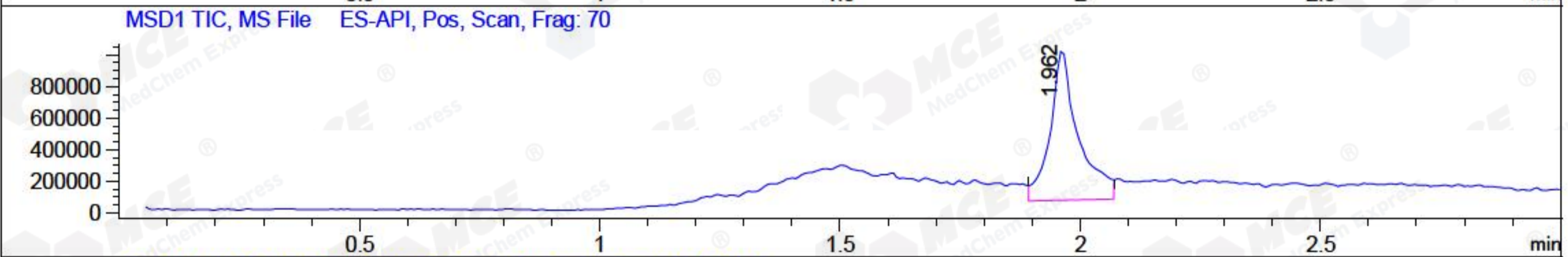
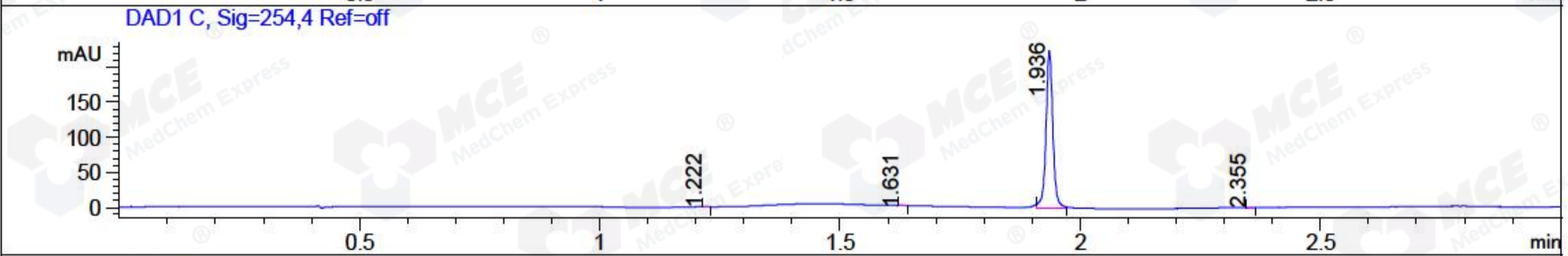
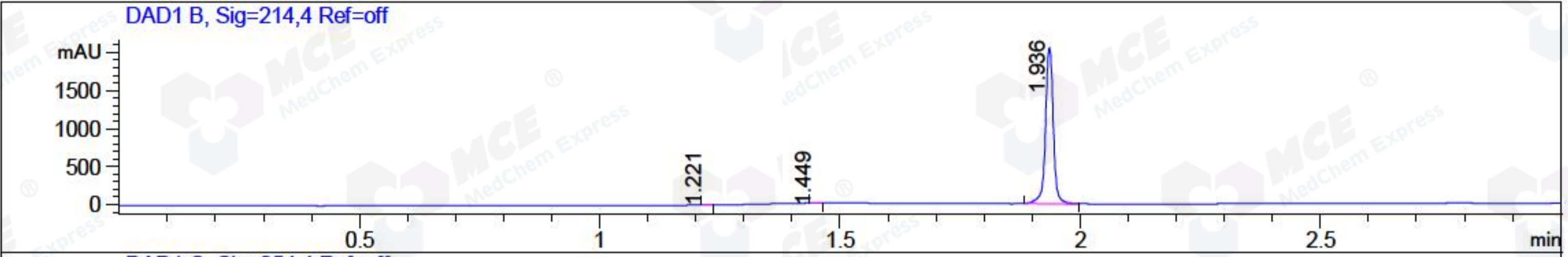


File ..1\DATA\2018\20181113\488\BIZ2018-N13-CXL2.D Tgt Mass (CHM):
 Injection Date : 13 Nov 18 11:33 am +0800 Seq. Line : 17
 Sample Name : BIZ2018-N13-CXL2 Location : P1-C-02
 Acq. Operator : LQ_1052 Inj : 1
 Spec. Reported : MS Integration Inj Volume : 1 ul
 Acq. Method : D:\Chem32\1\data\2018\20181113\488\1-POS-3MIN-1.M
 Analysis Method : D:\CHEM32\1\DATA\2018\20181113\488\1-POS-3MIN-1.M
 Catalog No : HY-16927 Batch#34260 A-RP-314
 Method Info : Mobile Phase: A: water(0.01%TFA) B:ACN(0.01%TFA)
 Gradient: 5% to 95%B within 1.3 min
 Flow Rate :1.8ml/min
 Column :SunFire C18, 4.6*50mm,3.5um A-RP-314
 Oven Temperature : 45□



Integration Results for DAD1 B, Sig=214,4 Ref=off

RetTim	Width	Area	Height	Area%	MS (+)
1.22	0.01	3.09	4.84	0.13	321
1.45	0.02	2.44	2.54	0.10	336
1.94	0.02	2316.82	2047.18	99.76	396

Integration Results for DAD1 C, Sig=254,4 Ref=off

RetTim	Width	Area	Height	Area%	MS (+)
1.22	0.01	0.38	0.66	0.17	321
1.63	0.01	0.18	0.30	0.08	336
1.94	0.02	221.36	224.41	99.67	396
2.36	0.01	0.17	0.23	0.08	159

Integration Results for MSD1 TIC, MS File

RetTim	Width	Area	Height	Area%	MS (+)
1.96	0.06	3885971.00	954048.63	100.00	396

Ret. Time: 1.96

<<<< POSITIVE SPECTRA >>>>

ES-API Positive

