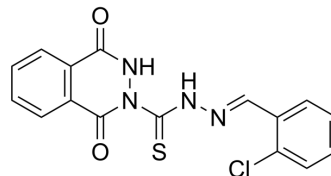


TOPOI/PARP-1-IN-2

Cat. No.:	HY-169299
Molecular Formula:	C ₁₆ H ₁₁ ClN ₄ O ₂ S
Molecular Weight:	358.8
Target:	PARP; Topoisomerase; Apoptosis
Pathway:	Cell Cycle/DNA Damage; Epigenetics; Apoptosis
Storage:	Please store the product under the recommended conditions in the Certificate of Analysis.



BIOLOGICAL ACTIVITY

Description	TOPOI/PARP-1-IN-2 (compound 6c) is a dual PARP-1 and topoisomerase 1 (TOPO-1) inhibitor with IC ₅₀ s of 32.2 nM and 46.2 nM, respectively. TOPOI/PARP-1-IN-2 shows a selectivity for PARP-1 over PARP-2. TOPOI/PARP-1-IN-2 disrupts the cell cycle at the S phase and induces apoptosis in NCI-60 cancer cell lines ^[1] .		
IC₅₀ & Target	PARP-1 32.2 nM (IC ₅₀)	Top1 46.2 nM (IC ₅₀)	PARP-2 2844 nM (IC ₅₀)

REFERENCES

[1]. Eman M Elkafoury, et al. Synergy trap for guardian angels of DNA: Unraveling the anticancer potential of phthalazinone-thiosemicarbazone hybrids through dual PARP-1 and TOPO-I inhibition. *Bioorg Chem.* 2024 Oct 29;153:107924.

Caution: Product has not been fully validated for medical applications. For research use only.

Tel: 609-228-6898

Fax: 609-228-5909

E-mail: tech@MedChemExpress.com

Address: 1 Deer Park Dr, Suite Q, Monmouth Junction, NJ 08852, USA