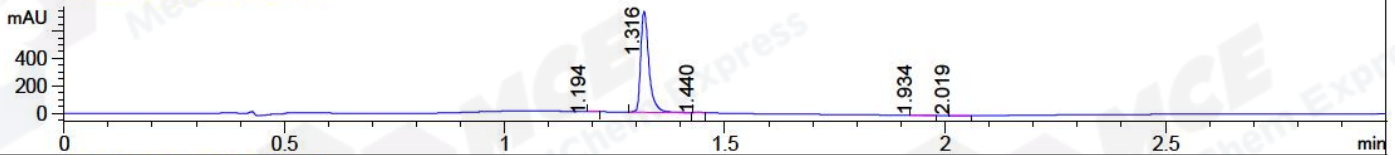
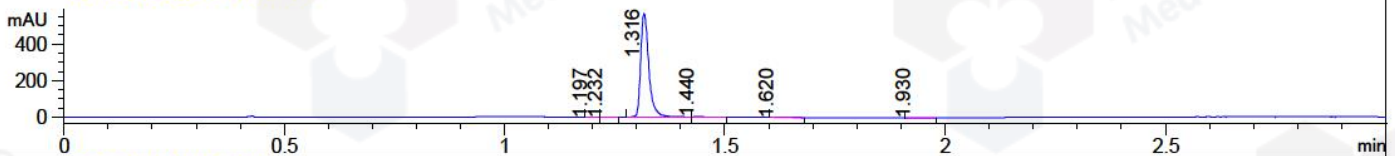


File ..\2018\20180920\20180920\CPK2018-920-19080.D Tgt Mass (CHM):
Injection Date : 20 Sep 18 5:11 pm +0800 Seq. Line : 102
Sample Name : CPK2018-920-19080 Location : P2-C-03
Acq. Operator : SYSTEM Inj : 1
Spec. Reported : MS Integration Inj Volume : 1 ul
Acq. Method : D:\LCMS03\Data\2018\20180920\20180920\1-POS-3MIN.M
Analysis Method : D:\LCMS03\Data\2018\20180920\20180920\1-POS-3MIN.M
Catalog No : HY-16956 Batch#19080
Method Info : Mobile Phase: A: water(0.01%TFA) B:ACN(0.01%TFA)
Gradient: 5% to 95%B within 1.3 min
Flow Rate :1.8ml/min
Column :SunFire C18, 4.6*50mm,3.5um A-RP-186
Oven Temperature : 45C

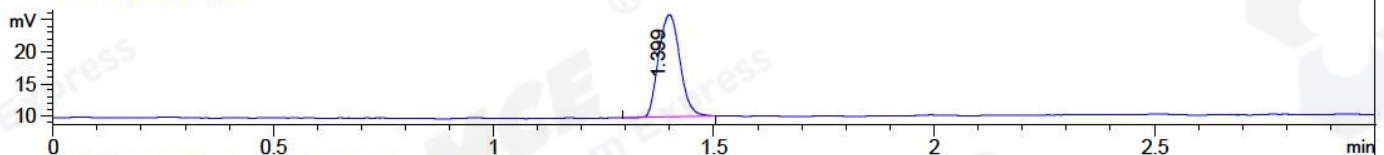
DAD1 A, Sig=214,4 Ref=off



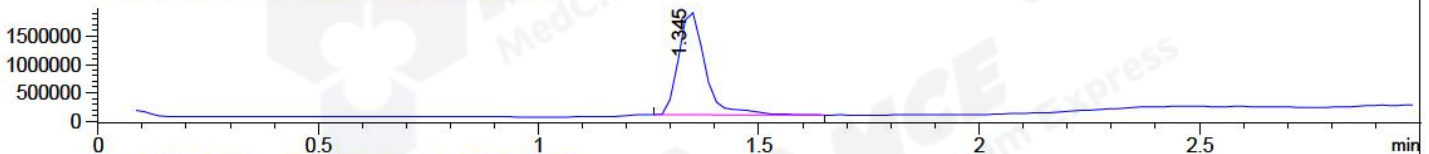
DAD1 B, Sig=254,4 Ref=off



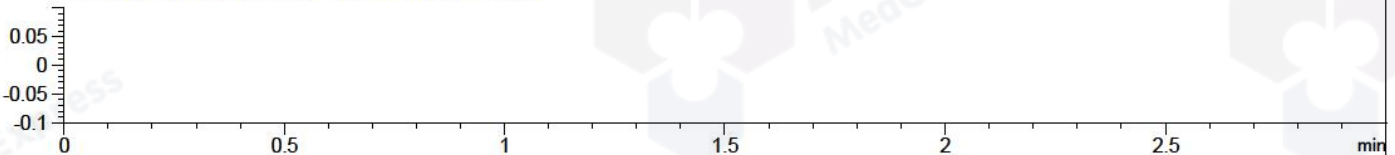
ELS1 A, ELSD Signal



MSD1 TIC, MS File ES-API, Pos, Scan, Frag: 70



Ion 1, MSD1 1, Target Mass 0 +H Positive, EIC=0.7:1.7



Integration Results for DAD1 A, Sig=214,4 Ref=off

RetTim	Width	Area	Height	Area%	MS (+)
1.19	0.02	0.59	0.52	0.06	384
1.32	0.02	946.87	727.66	99.43	398
1.44	0.01	2.77	3.13	0.29	398
1.93	0.03	1.44	0.74	0.15	233
2.02	0.03	0.62	0.25	0.07	233

Integration Results for DAD1 B, Sig=254,4 Ref=off

RetTim	Width	Area	Height	Area%	MS (+)
1.20	0.02	0.58	0.57	0.08	384
1.23	0.02	0.39	0.29	0.05	384
1.32	0.02	726.22	564.87	99.18	398
1.44	0.02	3.45	2.88	0.47	398
1.62	0.02	0.87	0.53	0.12	398
1.93	0.03	0.74	0.40	0.10	233

Integration Results for ELS1 A, ELSD Signal

1.40	0.05	53.59	15.87	100.00	398
------	------	-------	-------	--------	-----

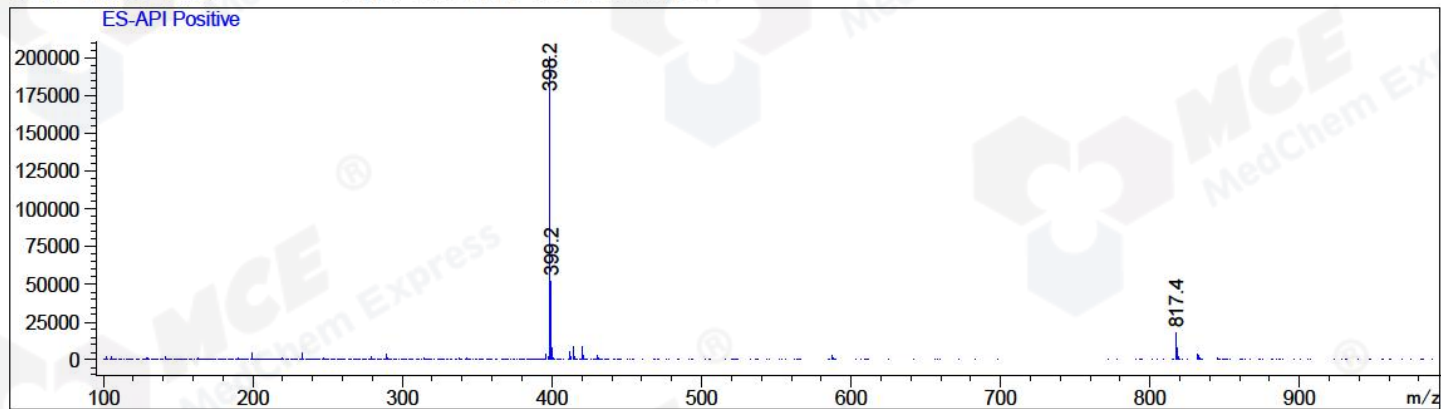
Integration Results for MSD1 TIC, MS File

RetTim	Width	Area	Height	Area%	MS (+)
1.35	0.06	7607145.00	1824695.88	100.00	398

RetTim	Width	Area	Height	Area%	MS (+)
--------	-------	------	--------	-------	--------

Ret. Time: 1.35

<<<< POSITIVE SPECTRA >>>>



*** End of Report ***