

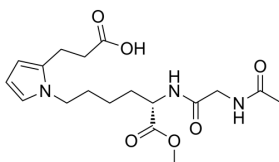
CEP dipeptide 1

Cat. No.:	HY-16959
CAS No.:	816432-15-2
Batch No.:	18020
Chemical Name:	L-Norleucine, N-acetylglycyl-6-[2-(2-carboxyethyl)-1H-pyrrol-1-yl]-, 21-methyl ester

PHYSICAL AND CHEMICAL PROPERTIES

Molecular Formula:	C ₁₈ H ₂₇ N ₃ O ₆
Molecular Weight:	381.42
Storage:	Sealed storage, away from moisture
	Powder -80°C 2 years
	-20°C 1 year
	* In solvent : -80°C, 6 months; -20°C, 1 month (sealed storage, away from moisture)

Chemical Structure:



ANALYTICAL DATA

Appearance:	Off-white to yellow (Solid)
LCMS:	Consistent with structure
Purity (LCMS):	99.75%
Conclusion:	The product has been tested and complies with the given specifications.

Caution: Product has not been fully validated for medical applications. For research use only.

Tel: 609-228-6898

Fax: 609-228-5909

E-mail: tech@MedChemExpress.com

Address: 1 Deer Park Dr, Suite Q, Monmouth Junction, NJ 08852, USA