

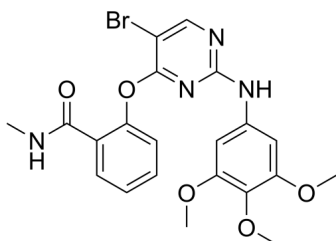
SBI-0206965

Cat. No.: HY-16966
Batch No.: 160541
CAS No.: 1884220-36-3
Molecular Formula: C₂₁H₂₁BrN₄O₅

ANALYTICAL DATA

Theoretical: C(51.55%), H(4.33%), N(11.45%)
Result: C(51.47%), H(4.22%), N(11.38%)

Chemical Structure:



Caution: Product has not been fully validated for medical applications. For research use only.

Tel: 609-228-6898

Fax: 609-228-5909

E-mail: tech@MedChemExpress.com

Address: 1 Deer Park Dr, Suite Q, Monmouth Junction, NJ 08852, USA