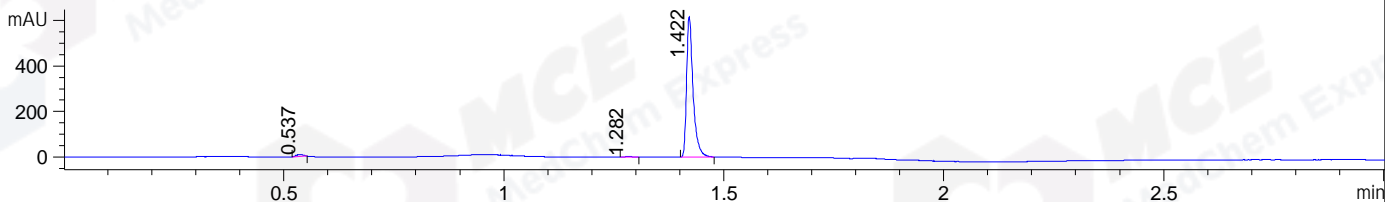
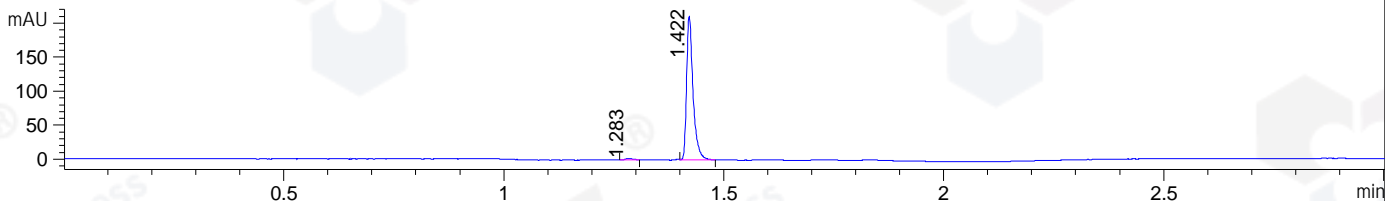


File ..DATA\2019\20191016\733\CPK2019-014-05410-.D Tgt Mass (CHM):
 Injection Date : 16 Oct 19 3:28 pm +0800 Seq. Line : 84
 Sample Name : CPK2019-014-05410 Location : P1-F-01
 Acq. Operator : ZJ_1432 Inj : 1
 Spec. Reported : MS Integration Inj Volume : 0.5 ul
 Acq. Method : D:\Chem32\1\data\2019\20191016\733\1-POS-3MIN.M
 Analysis Method : D:\CHEM32\1\DATA\2019\20191016\733\1-POS-3MIN.M
 Catalog No : HY-17003 Batch#05410
 Method Info : Mobile Phase: A: water(0.01%TFA) B:ACN(0.01%TFA)
 Gradient: 5% to 95%B within 1.3 min
 Flow Rate :1.8ml/min
 Column :SunFire C18, 4.6*50mm,3.5um A-RP-433
 Oven Temperature : 45□

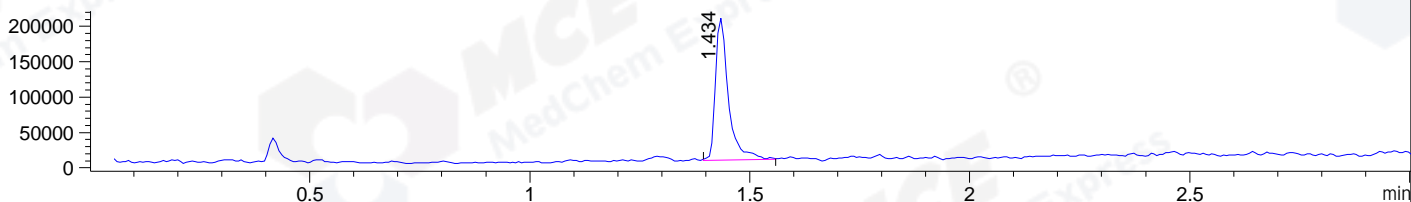
DAD1 B, Sig=214,4 Ref=off



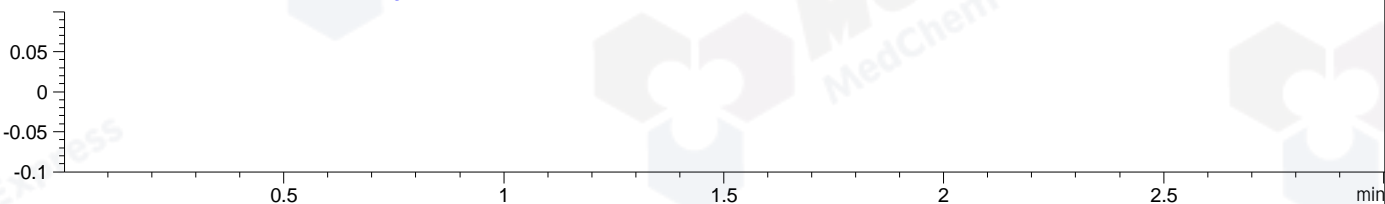
DAD1 C, Sig=254,4 Ref=off



MSD1 TIC, MS File ES-API, Pos, Scan, Frag: 70



Ion 767.37238, MSD1 767.37238, Target Mass 766.37238 +H Positive, EIC=767.07:768.07



Integration Results for DAD1 B, Sig=214,4 Ref=off

| RetTim | Width | Area | Height | Area% | MS (+) |
|--------|-------|--------|--------|-------|--------|
| 0.54 | 0.02 | 9.20 | 8.42 | 1.43 | 130 |
| 1.28 | 0.02 | 2.72 | 2.61 | 0.42 | 130 |
| 1.42 | 0.02 | 630.55 | 618.87 | 98.14 | 671 |

Integration Results for DAD1 C, Sig=254,4 Ref=off

| RetTim | Width | Area | Height | Area% | MS (+) |
|--------|-------|--------|--------|-------|--------|
| 1.28 | 0.02 | 2.35 | 1.98 | 1.09 | 130 |
| 1.42 | 0.02 | 213.73 | 211.04 | 98.91 | 671 |

Integration Results for MSD1 TIC, MS File

| RetTim | Width | Area | Height | Area% | MS (+) |
|--------|-------|-----------|-----------|--------|--------|
| 1.43 | 0.03 | 414043.22 | 201204.89 | 100.00 | 671 |

Ret. Time: 1.43

<<<< POSITIVE SPECTRA >>>>

ES-API Positive

